



MATARIKI KĀINGA HOKIA MATARIKI CALLS YOU HOME

Matariki is a time for remembrance, celebrating the present and looking to the future. The three key principles for Matariki are:

- Matariki Hunga Nui | Remembrance - Honouring those we have lost since the last rising of Matariki.
- Matariki Ahunga Nui | Celebrating the Present - Gathering together to give thanks for what we have.
- Matariki Manako Nui | Looking to the Future - Looking forward to the promise of a new year.

South Waikato Trades Training Centre blessed and named

The Kāpaukura with the guidance of Raukawa kaumatua recently blessed the soon-to-open \$14 million South Waikato Trades Training Centre, now named Pūkenga Rau, during a dawn ceremony.

Amanda Hema, Chief Executive of South Waikato Investment Fund Trust (SWIFT), highlighted the Centre's significance in showcasing the community's commitment to education and training.

The project originated in 2007 to address staff shortages, leading to the establishment of trade courses and earning national recognition for youth training in 2008. With support from Raukawa Charitable Trust, South Waikato District Council, and a \$11 million investment from the Ministry of Business Innovation and Employment, the Centre will provide expanded training opportunities.

Toi Ohomai Te Pūkenga will be the primary tenant,

and SWIFT will also be housed in the building, while other businesses are invited to express their interest in joining.

Pūkenga Rau will cater to various industries and offer broader educational offerings to the community.



BLAST FROM THE PAST

New Zealand's first postage stamps went on sale on 18 July 1855. The adhesive, non-perforated stamps for prepaid postage were the famous 'Chalon Head' design, showing Queen Victoria in her coronation robes. New Zealand issued its first postage stamps 15 years after they were introduced in Britain. The three stamps in the 'Full-face Queen' set – one penny (1p), two pence (2p) and one shilling (1s) – were printed in Britain. Other values were added later. During the 1890s, New Zealand became one of the first countries to release stamps with images of the countryside, birds and animals.

IN HOUSE

Produced in-house for South Waikato residents by the SWDC Communications Team.

Editorial: Kerry Fabrie,
Brooke Sullivan and
Lisa Chunder
07 885 0340
Print: SCG Communications



Landslide at Te Waihou/Blue Spring

On Thursday 29 June a landslip at the Leslie Road carpark end of Te Waihou Walkway closed the track. A second significant rockfall several days later further compromised the walking track.

Residents and visitors can still wander Te Waihou Walkway and gain access to the Blue Spring (Te Puna) area but need to enter and return from the Whites Road end only. The short walk option from Leslie Road to the Blue Spring is not currently accessible.

Council staff are considering options for short- and long-term fixes, but we do not expect the track will re-open any time soon. Unfortunately as well, full costs are currently unknown.

Engineers, a surveyor and the landowner have met with Council's Project Manager on site to discuss a way forward. Council will also be liaising with Raukawa and Waikato Regional Council and other stakeholders.

To date, Council has installed security fencing (ten panels of which have since been stolen), signage, and a security guard (as people were ignoring the fencing and signage). Most recently we have installed a manned road block at the intersection of Whites Road and Leslie Road which is now open to residents only.

Staff have contacted neighbouring i-SITES to advise updated guidance to tourists.

We are awaiting geotech assessment of the cliff face before any attempt is made to clear the rockfall below the slip.

It is imperative that the public stay out of the area.

As a result of the slip, access to the Blue Spring headworks is inaccessible to our water services team. Currently the Blue Spring water source is offline, and the Putāruru township is fed only from the Glenshea bore. This has happened before and during winter especially doesn't pose any supply issues.



Are you eligible for a rates rebate? Need a payment plan?

Many homeowners are finding it hard to make ends meet in the current economic climate. Council would like to encourage homeowners, especially pensioners and low income homeowners, to check their eligibility for a rates rebate as it could significantly reduce their rates bill.

To check your eligibility visit the rates rebate website (www.ratesrebates.govt.nz). If you're eligible, you will need to complete an application form and return it to Council by 30 June 2024.

But wait, there's more...

Did you know that Council offers easy payment options? You can pay your rates weekly, fortnightly, monthly, quarterly or annually. The best option is direct debit as these are adjusted annually by Council to ensure that the correct amount of rates is paid.



Sharing is caring!

Spread the word with your whānau, friends and neighbours and ask them to check their eligibility as well.

We are here to help!

For more information on how to apply for a rates rebate or start a payment plan, please call Council on 07 885 0340.

KEEPING IT KIND ON PUBLIC TRANSPORT

We know many people use and enjoy the South Waikato Connector public bus service. And many of you may know the lovely bus drivers who drive the route around Tokoroa and through to Putāruru and Tirau five days a week.

The South Waikato Connector service stops at designated bus stops. There are two stops in Tirau, three in Putāruru and, to support the round town trip, 26 bus stops in Tokoroa.

Waikato Regional Council, that manages and funds the service, has just installed brand new signage so spotting where the bus stops are, is now really easy.

Just a reminder that the bus drivers may only stop at the designated bus stops and stick rigidly to the road code. In fact, stopping elsewhere can potentially result in fines and accidents.

It is unfortunate that a recent incident occurred where a passenger asked a bus driver to stop while going round a roundabout and when the driver didn't (because stopping on a roundabout is both illegal and not a designated stop), she was verbally abused by the passenger.

Just some general kind things to do:

- Let passengers exit the bus first before getting on.
- If necessary and you are able, give up your seat for older or disabled people.
- Respect other users and the drivers. A "good morning" and "thank you" goes a long way.
- Keep devices quiet.
- Be patient with people with disabilities or elderly who may take longer to get on or off the bus.



Travel piece in the New Zealand Herald by Ceana Priest and her family excursion around the South Waikato, visiting our favourite spots.

Right: the bridges at Lake Moananui reserve have been repainted, looking flash!



WHAT'S HOT WHAT'S NOT

Sadly, our Animal Control team had to put down an entire litter of dumped puppies. The puppies had unfortunately been dumped in the cold for too long and were too malnourished to survive, all nine puppies had to be put down. Desexing animals can be expensive, we know, but there are charity organisations that can help. Do the right thing. Stop having unwanted puppies.

Right: Dumping of carcasses - so nasty we've blurred the photo... take a moment to think about our poor contractors who had to pick it up! Plus also note the dumped rubbish and mattresses in the background!



Below: stealing rubbish bins, demolishing several, costing money, making a mess...



Vandalism at the new Putāruru skatepark, before it's even opened!

Right: Putting paper from a shredder in the cardboard and paper receptacle might seem like the right thing to do. However this happens when the cage is picked up and emptied... and it's worse when it's windy - scraps of paper everywhere! Please contain shredded paper by wrapping it tightly in a piece of newspaper (for instance) or rather put it in the rubbish.



Super Special WHAT'S HOT

Just a shout out to the Putāruru Rugby Club team for playing their hearts out, winning the Mooloo Shield 1st Division for the first time in 25 years!

Great effort from the team, beating Leamington 24 points to 17. The club grounds were jam packed with supporters who urged the boys on throughout the game.

Photo acknowledgement - Putāruru Rugby Club.



Billah Street Reservoir gets an upgrade

In May, Council staff in collaboration with contractor, Service Engineers, started repair and maintenance work at the Billah Street Reservoir.

While the Billah Street Reservoir, with a volume of 4.5 million litres, is smaller than the other two reservoirs in the town, it is a vital component in the town's total reticulation network.

All the water that comes from Elizabeth Park - Tokoroa's only source of water, is treated at the Billah Street Reservoir before it is pumped to the Colson Hill reservoirs.

Due to the complexity of the work involved, the teams took a phased approach to prevent water interruption to Tokoroa residents. Phase one involved the installation of a bypass. This was a critical element in the project as it ensured that residents would not experience a water outage when teams began work on Phase 2 - to replace the old and dilapidated dropper pipe inside the reservoir. The team also took the opportunity to install a new ladder inside the reservoir. The reservoir was cleaned and disinfected after all work was completed. Tokoroa residents can have peace of mind knowing that the town's water reticulation network is regularly monitored and maintained. A huge shout out to the Water Service and Project Management Teams for undertaking this massive project, with no water interruption to residents.

Did you know?

- The Billah Street Reservoir was built in 1957.
- The Billah Street Reservoir has a volume of 4.5 million litres, the Colsons Hill No.1 reservoir has a volume of 6.5 million litres of water and Colsons Hill No.2 reservoir has a volume of 9 million litres of water - twice the volume of the Billah Street Reservoir!
- During peak day demand Tokoroa's reticulation network provides residents and businesses with 8 million litres of water per day.



Service Engineers removing the old water pipe that feeds into the Billah Street Reservoir. It was replaced with a new pipe.



Service Engineers loading the new access ladder.

Shining a light on street lights

PROBLEMS

Streetlights fail for a number of reasons - from blown bulbs and pole fuses, to problems with the power cable supplying the lights.

There are also two types of relays which tell the lights when to turn on and off; one that goes from the Powerco network to the entire streetlight network, and one within streetlight pillar boxes which control subsets of lights. Relay problems cause streetlights issues, like failure to come on at night, or dayburning.

Council contractors attend all streetlight faults in the first instance to make repairs, and if the problem is with the power supply to the poles, or with the network relay, the issue is escalated to Powerco.

In some weeks, Council's contractors can repair up to 20 lamps and/or fuses that are reported faulty.

Recently the power supply to poles has affected a number of streets in the district. Powerco has now resolved many of these, with just two still to be resolved - Putāruru (Princes Street), and one in Tirau (Patetere, SH27, SH1).

RESOLUTION

Issue	Time to fix	Action	Responsibility
Blown or flickering lamp	3-5 days	New lamp fitted, light checked and cover cleaned	Council
Failed lights in entire street due to relay fault	1-3 days	Pillar box relay checked and replaced	Council or Powerco
Failed lights in entire street due to cable fault	Dependent on Powerco	Location of cable fault identified and repaired	Powerco
Failed lights over entire region or area	Dependent on Powerco	Resend the network relay signal	Powerco

OWNERSHIP

Lights, pole fuses, pillar box relays and poles are owned by Council and maintained under contract.

The network relay, and the cables supplying power to the fuse at the bottom of the streetlight pole are owned and maintained by Powerco.

Power is supplied by providers, such as Genesis, Mercury, etc.

REPORTING

All street light failures and faults should be reported to Council to be captured as a service request. This will ensure we can pick up frequent fault areas which may be an indication of a deeper issue.

Remember, Council may not be able to resolve all the issues. It may rest with Powerco.

EFFICIENCIES

To improve cost efficiency, Council asks the contractor to attend multiple outages at once, where possible. This means some of the minor light repairs may extend past the given response times.

URGENT WORK

Poles struck and/or damaged by vehicle crashes or other incidents are attended and made safe immediately for public safety. Struck poles can expose live power cables.

Maraetai Road Intermodal Business Park

The Maraetai Road Intermodal Business Park in Tokoroa creates 15 lots of development-ready industrial-zoned land with direct access to a rail siding and ports. The development provides an opportunity for owner-occupiers and developers to leverage the South Waikato's central location, strong road and rail links, ready workforce and affordability.

ECONOMIC FOCUS

Council is excited to be driving this significant economic development project. It will create jobs for our people and enable the development of a hub for light industry and logistics in Tokoroa.

Council has a strong focus on developing and growing our economy for the long-term benefit of our community.

STRENGTHS

Playing to our strengths of central location in the North Island, strong road and rail links and our proximity to the economic Golden Triangle makes Tokoroa an ideal location for a logistics hub.

FROM THE MAYOR

SWDC Mayor Gary Petley said the Maraetai Road development will enable significant expansion of container rail freight volumes through the existing Tokoroa Road/Rail Terminal which provides intermodal (road and rail) connectivity to Port of Tauranga, Port of Auckland and into international markets.

“South Waikato is the smart choice for manufacturers and processing industries; affordable, connected and accessible with a highly skilled workforce,” said Mayor Petley.

LOCATION

Located just off State Highway 1, the Maraetai Road Intermodal Business Park sits at the southern edge of the country's golden triangle economic zone. It is being developed by SWDC with funding from Kānoa and support from the South Waikato Investment Fund Trust (SWIFT) and the Government to attract new businesses, jobs and prosperity to South Waikato.

ATTRIBUTES

The park will provide 15 fully serviced lots for sale, all with freight access through the adjoining terminal, ranging in size from 1,696m² to two hectares with the flexibility to combine lots to meet investor/occupier requirements.

TIMING


Development of the business park will start this year with staged development through to the end of 2024. It is expected to generate between 150 to 200 new jobs in the district.

CONCLUSION

This project started in late 2018 and has involved significant advocacy, discussion and engagement with many stakeholders in Tokoroa, the wider Waikato region and with Kānoa – Regional Economic Development & Investment Unit.


LOCATION

Lots 1-15, Maraetai Road, Tokoroa




AVAILABLE

mid-2024




POTENTIAL JOBS

150




LAND AREA

Various - 1,696 sqm to 2 hectares




ZONING

Industrial, under Council's District Plan



POTENTIAL NEW BUSINESSES

15





Celebrating new citizens

On 9 June, His Worship Mayor Gary Petley and Council staff welcomed six incredibly inspiring individuals from the Republic of Korea, England, South Africa, Philippines and Australia who have chosen to call New Zealand their home. It's always a special moment to see people from all corners of the world become Kiwis!

We spoke to one of the new citizens, Seegers Vorster and this is what he had to say, "We are over the moon to have become New Zealand citizens. It is a humbling experience, and we are extremely grateful to call this our home."

Seegers and his wife Marlien moved to New Zealand from South Africa more than seven years ago.



Siwoo Han (left) from the Republic of Korea



The Vorster family from South Africa



Brenda Hulme from England



Karlo Naig (centre) from the Philippines



All new citizens were presented with native trees

A new home for two Tokoroa Talking Poles

Tokoroa's Talking Poles have become established landmark features in the town. The beautiful and thought-provoking public art pieces were designed for locals and visitors alike to appreciate. The sculptures, *Evolution* and *Business and Professional Women* have been relocated to the Tokoroa War Memorial Sportsground. A karakia was performed on site on 15 June with His Worship Mayor Gary Petley, Chief Executive Susan Law and the Parks and Reserves team. The sculptures have been beautifully situated and can once again be fully appreciated by the public.

Interesting facts about Tokoroa's Talking Poles

Evolution was created by artist Donald Buglass in 2006. The column is DNA shaped and reflects humans as part of the universe and society. The artist has used lots of different rock and objects found from around our District in his sculpture.



The three *Business and Professional Women* sculptures were commissioned by the Tokoroa Business and Professional Women's Group to represent the women of our community. Mana wāhine - women are held in high regard within Te Ao Māori and are referred to as TeWhare Tangata (The house of humanity).

These taonga are an acknowledgement to all mana wāhine and speaks of the many roles and responsibilities mana wāhine transmit to ensure the continuation of future generations.

Each taonga expresses the many learnings, traditions, practices, wisdoms, determination and values shared by all mana wāhine within our community. These taonga were gifted by Darren Keith.



Recycling isn't rubbish and rubbish isn't recycling

You may have seen Council's Recycling Educator Tracey out and about across the district early each morning. She's checking out the content of our recycling wheelie bins, to keep an eye on contamination levels.

If the recycling in any one truck is too badly contaminated, the whole truckload is redirected to landfill.

This means that all the recycling items in the truck end up in landfill and sadly is a waste of effort for the people who took care in preparing their recycling.

Not taking care with your recycling is disrespectful to both the environment and your neighbours.

Generally, recycling contamination levels from the South Waikato community are around 10%. The cut off is 12% contamination at which point the truck's contents is sent to landfill; which unfortunately happened to one of our trucks recently. What a waste!

We know that it can be confusing to work out what is allowed and what is not.

But dirty nappies in the recycling... this cannot possibly be considered appropriate for recycling. And yes, that's one of the main causes of contamination.

The second main cause is soft plastics. If you can screw it up in your hand, put it in the bin!



And the third cause is dirty items. Recycling needs to be clean, washed and/or rinsed.

On to the good stuff...

Tracey tells us that she has several positive conversations daily with people in our community. Many times, she has been asked questions about recycling and people are really engaged when she runs them through any issues with their own recycling.

"It's great when people actually see me in the street and come out to talk to me or ask questions," said Tracey. "I think most people really value the education and want to do the right thing."

If in doubt, put the item in the rubbish or check out Council's Waste Guide on our website.

A MAN'S BEST FRIEND

It's always extra special when we get to see dogs we've rescued in the past come in for a visit.

Meet Michael and his best friend Dee.

Their friendship started nearly two years ago, when Michael Cowling-Wilson had a discussion in the supermarket about getting a dog. He was told to pop into Council and see if they had any dogs in the pound that may be suitable.

Some may call it fate, Michael called it his life-saving moment when the moment he came into the Council office to ask about a dog, Dee had just been rescued off the streets. They stepped foot into the Tokoroa office within minutes of each other.

Two years on, these two are absolutely inseparable. You will find Dee trotting closely behind wherever Michael goes. Dee is living her best life being looked after and loved unconditionally by her owner and Michael has a best friend who gets him out for a walk every day and keeps the smile on his dial.

If you're ever looking for a fur-ever friend, don't forget to keep in mind the beautiful pound pups that have been rescued and need a loving home.



NEW FUR-EVER HOME FOR MINNIE



You may remember Minnie from our dog registration promotions. At the time, she was looking for a fur-ever home... and she found it!

Just a thank you to everyone who invested in Minnie's story and put their hands up to generously adopt her into their loving homes.

Minnie has now found her fur-ever home with Bill and Pam. They had been looking for a dog just like Minnie for a while since their last dog passed away. Minnie absolutely loves Bill and follows him everywhere he goes!

We just love happy endings like these.

THE PEOPLE IN YOUR CAR (AND THE ROLES THEY PLAY)

Kiwis love road trips. A recent study found that Kiwis took a huge 10 million road trips last year! Most people take roadies with their whānau, with only a small percentage planning to travel with friends. No matter who you travel with, it's still a good idea to recap on the roles we each play in the car.



Driver:

- Focuses on the road
- Stays sober
- Obeys the traffic code
- Parks like a boss

Passenger seat (aka Shotgun):

- Keeps the back seat peeps in line
- Keeps an eye out for hazards
- Designated texter
- Mad DJ skill
- Primary navigator

Back seat:

- Observer (of landmarks to destination)
- Occasional napper
- Asker of 'are we there yet?' and 'is there anything to eat?'
- Shouter of 'yellow car!' or 'I need to wee!'

TOKOROA HOST LIONS REACHES OUT

We're pleased to feature a shout out to the Tokoroa Host Lions – a group that does tremendous good locally in the South Waikato and further afield. Their strength is in their membership – dedicated individuals and business people from around the South Waikato raising funds, funding required works or in many cases, just getting stuck in and doing it themselves.

The group also supports disasters around the world, having recently made several donations to both New Zealand and international relief funds: most recently Australian bush fires (\$5,000), Tongan tsunami (\$10,000), earthquake in Turkey (\$5,000) and the Auckland floods (\$5,000).

Tapping into their business network, including support from individuals, the Tokoroa Host Lions,

SIGN UP FOR SHAKEOUT!

New Zealand ShakeOut, our national earthquake drill, is taking place on Thursday 19 October 2023 at 9:30 am.

You can register your participation - either as an individual or company, club, school etc at the ShakeOut Website.

ShakeOut is held across the world to remind people of the right action to take during an earthquake - Drop, Cover and Hold.

New Zealand ShakeOut was first held in 2012. Whether you're doing the drill for the first time or you've done it before, taking part in New Zealand ShakeOut 2023 is as easy as 1-2-3! Drop-Cover-Hold.

If you're on a coast, you can also participate in the Tsunami Hikoī. This is where you can practice your evacuation walk to high grounds in your area.

The ShakeOut website has heaps of information and resources including workplace preparedness plans, home emergency plans, lesson plans, teaching resources for schools and more - www.shakeout.govt.nz.



DROP down on your hands and knees. This protects you from falling but lets you move if you need to.



COVER your head and neck under a sturdy table or desk. If there is no shelter nearby, cover your head and neck with your arms and hand.



HOLD on to shelter until the shaking stops. If the shaking shifts your shelter around, move with it.



alongside Roundwood New Zealand filled two and half truck and trailers with farm posts valued at \$58,000, destined for stricken farmers in the Hawkes Bay region. The Lions worked with the Federated Farmers Rural Support Trust to find the best way to distribute the product. With product supplied at under cost and donated cartage, coupled with a further offer from Roundwood New Zealand working through Federated Farmers, a third fully loaded truck and trailer was added into the mix, bringing the total support package to \$70,000.

The Tokoroa Host Lions have given over \$1 million back to the community over the past 20 years.



Drovers' Trough and Accommodation Field makes the coveted Heritage List

Constructed on the Cambridge-Rotorua road in 1911, Drovers' Trough and Accommodation Field, was listed as a Category 2 Historic Place on the New Zealand Heritage List/Rārangi Kōrero on 7 July 2023.

Featuring a fenced field and an unusual triangular concrete water trough, the site used water pumping technology to provide water from the Waiohotu Stream to the site which is located at the top of a ridge. The trough is a rare surviving example of community facilities that were established to support drovers to transport stock around the country. Drovers' Trough and Accommodation Field maintains a current water supply.

(Source and photo credit: www.heritage.org.nz)



Congratulations to our annual dog rego winners!

Big congratulations to the following paw-some dog owners: Kimberley Constable, James McGuire, Anne Pulman and Rangi Tupa for being the lucky winners of the annual registration draw for 2023.

These lucky winners were randomly selected from the large number of those who put forward their emails and updated doggie details when registering their pups.

Their fur-ever besties Poppy, Diesel, Rosie and Koko won a free year's registration, some toys and a bunch of delectable treats to indulge in.



WE'RE TALKING RUBBISH

REPORT DUMPING TO COUNCIL

There are still a number of people in our district who don't care about the environment or take responsibility for their own rubbish. In fact we've recorded 53 incidences of illegal dumping this year!

Dumping can be reported to us via Antenna, Facebook, phone or email and via our website - www.southwaikato.govt.nz. Click on the Do It Online button. The Report Illegal Dumping form can be found under the Say It section.

Council needs to know a number of details to send warning letters, infringe and/or prosecute. These includes a description of what was dumped, the location, any photos you may have taken and your contact details (for record purposes only; these will never be disclosed). If you witness the dumping and can safely obtain the vehicle registration details or even names (if you know the person) this is extremely useful.

Prosecuting successfully through the courts requires a high level of detail.

BIN PLACEMENT KERBSIDE

Just a reminder about placing your wheelie bins and crates kerbside correctly so that the trucks can pick them up easily without damaging them.



- Place in a row on the verge as close as possible to the road.
- Place bins one metre apart.
- Close the lids on the bins.
- Don't overfill bins. Lid must close shut.
- The bins should face the road (ie, Council logo to road).
- Do not restrict access to driveways.
- Put crate(s) on ground, not on top of bin.
- Remember too, to distance bins from lamp posts, street signs etc.

WONDERING WHAT WASTE GOES WHERE?

Check out the Waste Directory on what goes where.

This directory lists everyday items such as batteries, keyboards, jam jars, cardboard, toasters, bedding, and many more and then tells you where it goes.

Some products are collected kerbside and go in one of the following:

- Red lid wheelie bin – for rubbish
- Yellow lid wheelie bin – for all recycling except glass
- Glass crates – for glass only

Other items aren't collected kerbside and can be taken elsewhere, such as:

- Transfer Station Hazardous Waste store
- South Waikato Achievement Centre for e-waste
- Local charity shops
- Local car dealers
- Local scrap metal dealers

All products have a place to go; we just need to learn where to put or take them. Visit www.southwaikato.govt.nz.

WHEN COUNCIL CONSULTS

From time to time, Council formally consults with its community on a range of activities, services, projects, initiatives, bylaws, plans and policies.

REQUIRED BY LEGISLATION

Consultation can occur because we're legislatively required to. This is outlined in a number of Acts of Parliament that govern what councils do. An example of this is the Annual Plan that we consulted on earlier this year (such as the Local Government Act 2002).

HIGH PUBLIC INTEREST

Consultation can also occur because the issue is of high public interest or high cost. An example of this is the consultation we did several years ago on introducing wheelie bins. The move away from bags to wheelie bins has a high level of public interest, affecting every urban resident.

HIGH COST

An example of a project that is consulted on due to high cost was when we asked for community submissions on closing the landfill to build a transfer station or build a new cell to keep the landfill operating.

TACTICS

We use a range of tools to capture as many people as possible. We advertise in our local newspaper, use our community newsletter In Touch (if timing allows), run radio adverts, post to social media, use our mobile phone app Antenno, and produce posters, flyers and a number of other tactics.

We also get out and about into the community, taking Council's consultation material directly to the people by holding our own public meetings or drop in sessions, being present at large community events, liaising directly with known interested groups and using our email and other networks.

Our Elected Members too are active in this space as they are often a point of contact for the community.

FIND OUT MORE

All consultation material is made available on our website www.southwaikato.govt.nz – COMMUNITY ENGAGEMENT (just under the search bar). Make the link above a favourite and keep checking in. We haven't always got something open for consultation but when we do, it would be great to hear from you. Look for this image... it means we want to hear from you!

kōrero mai
now we're
talking...

Welcome to the South Waikato

When you move to a new district there are various things you really need to know fairly quickly! Like when is my rubbish day? Where is the nearest library? Who is my local Councillor? Among so many things.

Here's where you get much of that information :

- Access the South Waikato District Council website - www.southwaikato.govt.nz and make it a favourite. It has contact details for Council, the whereabouts of your libraries, your rubbish collection day, how to register your dog, pool opening hours, among heaps more.
- Download Antenno on your mobile device. Enter your address (eg, 2 Here Street) and you will receive notifications from Council relevant to your address. You can also use this app to report things to Council, like water outages, potholes, flooding etc.
- Follow/like Council's Facebook page for up to date and regular information - www.facebook.com/southwaikatodistrictcouncil. We post daily. Our Facebook page is a great source of information.

Antenno and Facebook are particularly important during flooding or emergency events!



MORE CABINET ART FOR SOUTH WAIKATO

The Chorus Cabinet Art Programme is back, in partnership with Council, and submissions are now open.

Four cabinets have been chosen for beautification, one in Putāruru and three in Tokoroa, and artists are encouraged to submit their designs by Thursday 31 August.

The project, which sees frequently tagged cabinets painted in artworks, has been very successful, so Chorus has continued its partnership with Council to support local artists and the community.

Chorus Community Relations Manager Jo Seddon says that it makes sense to partner with local councils, as they have the same goal in mind to discourage graffiti vandalism.

"It is great to work with local councils when it comes to choosing cabinets and designs as they know their communities best," she says. "South Waikato District Council has worked with us to identify four cabinets in need of a makeover and we're really looking forward to seeing what local artists come up with."

These cabinets become works of art in the street, often telling stories about the communities in which they are located, and help to discourage tagging.

Mayor Gary Petley says, "This initiative is a fantastic opportunity for our community. Not only does it mean we get new artwork in our streetscape, but it's a chance for our up-and-coming artists to showcase their talents."

Requests for designs are open until 31 August and the winning design for each cabinet will be chosen by a Council panel from entries received.

Some existing power boxes in the South Waikato are shown.

Twilight in the Forest depicts the NZ forest, including manuka, ferns and a fantail, in a simple yet striking manner says artist Sarah Kolver. Likely we all agree, this stunning power box looks amazing compared to what it looked like previously!



One of the most popular power boxes in this rugby mad nation is none other than Tokoroa-born professional rugby league player Joseph Manu, created by local teacher Taumata Soloman.



Ruth Clarke celebrates the potential of our young people with her Putāruru mural The Future Looks Bright. "The bright, artsy characters represent our next lawyers, doctors, scientists and leaders."

Taking on Plastic Free July

Did you know that the global Plastic Free challenge was held in July?

Plastic Free July is a global movement to encourage people to take part in the solution to plastic pollution.

Although July may be over, there are some handy tips and tricks we learnt over the challenge that can be applied to our everyday habit. Here are a few that you can practice in your homes:

- Bring your reusable cup to get your coffees
- Choose snacks without plastic packaging
- Try reusable food wraps
- Switch to reusable cloths and napkins
- Skip the plastic straw or use a metal one
- Switch to reusable shopping bags
- Use a reusable water bottle
- Try a solid bar of soap or shampoo
- Bring your own containers to your local takeaway
- Try making your own cleaning products.

Here at the South Waikato District Council, the team are all about learning new and effective ways to reduce, reuse and recycle. The recycling educator here at the SWDC has been making her way around the schools to show students how they can effectively reuse their plastic packings and items and below are a few of the creations they came up with!



NEWS FROM THE PLAZA



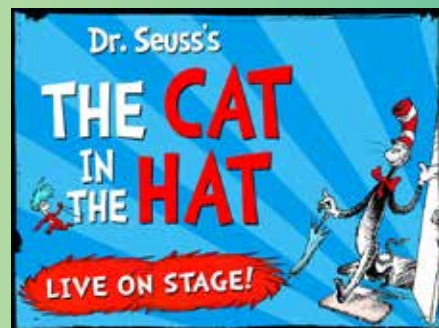
Mid-week movie: Cheaper by the Dozen (2003), Thursday 24 August, 10am. Tickets are \$10 entry. Rated PG.

John Denver & Beyond tribute show, Sunday 3 September from 1pm. About: New Zealand's answer to John Denver. Tickets: \$25 per person - available through Eventbrite.com only. Door sales available.

SWPICS Vaccination pop up clinic, Thursday 7 September from 2pm to 5pm - MMR - COVID - FLU. Walk in, no booking required.

Pride in Putāruru Present: Business & Community Awards 2023, Saturday, 9 September from 6pm onwards.

Dr Suess's The Cat in the Hat - Live on stage, Saturday 16 September, 10:30am. Tickets available soon!



Sunday movie: Book Club the next chapter, Sunday 17 September, 2pm. Rated PG-13. Tickets: \$10 for adults & \$5 for students

Bluelight NZ free movie: to be confirmed, Thursday 28 September, 10am. Free entry, snacks and drinks. Proudly supported by Kbeez Putāruru.

NZIFBB (body building) - Waikato Regional Championships, Saturday 30 September, from 11am to 4pm. About: Come and help support the Waikato community as they showcase their hard-earned physiques!

CONTACT THE PLAZA

Phone: 07 883 8596/0276 559 715
 Web: www.plaza.org.nz
 Email: theplaza@plaza.org.nz
 Facebook: [theplazaputaruru](https://www.facebook.com/theplazaputaruru)



With winter firmly upon us, the subject of this column is about one of the most important parts of your vehicle, and no we're not talking about the heater!

Remember - the only thing keeping you on the road is four pieces of rubber.

Our tyres are an essential part of our vehicles but are often only thought about when they cause us to fail a Warrant of Fitness (WoF). It's vital to regularly check your tyres and ensure they have plenty of tread. The faster you go, the less effective your tyres will be if the tread depth isn't up to scratch.

The minimum legal tread depth is 1.5mm and there must be at least 1.5mm around the whole circumference of the tyre.

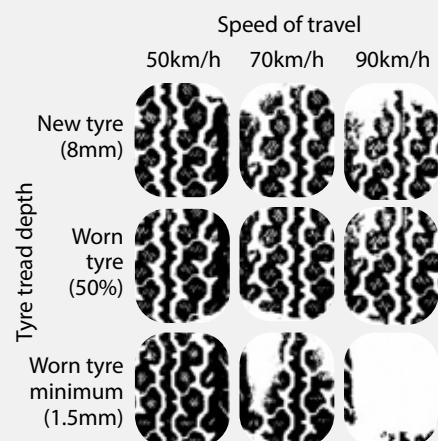
Another thing to check regularly is the pressure in your tyres. You can normally find your car's correct tyre pressure either on the inside of the driver's door, in the handbook, or you can ask the mechanic at the garage where you get your vehicle serviced. Legally, you need to keep your tyres at the pressure recommended by the vehicle manufacturer.

Tyres naturally lose air pressure over time so it's worth checking them every month or so.

Having the correct tyre pressure helps improve safety, handling, fuel efficiency and extends the tyre lifespan. Correct tyre pressure can help reduce fuel consumption by up to 4%.

Don't forget to make sure your spare wheel or space saver wheel is inflated to the correct pressure too.

How much of your tyre is in contact with the road in 1mm of water?



SEVEN GREAT WAYS TO FIND COUNCIL AND COMMUNITY NEWS

As a South Waikato ratepayer or resident, there are several ways you can hear about Council projects, consultations, events and community news.

In Touch

Our community newsletter is delivered to every household in the district six times a year. It contains news and information about Council, projects, events and district news. It is also available on our website and you can sign up to receive copies via email too.

Facebook

We post links to media statements, advertisements and announcements, as well as other news and happenings from across the district. Like us at: www.facebook.com/southwaikatodistrictcouncil.

Instagram

You can follow us on Instagram @southwaikatodc. We use our Instagram account to celebrate our outstanding district environment, community events and other key happenings.

Websites

Visit www.southwaikato.govt.nz for information about Council, the district and our services. Make this a favourite site!

Antenno

Antenno is a free mobile phone app that can be downloaded from the App Store or Google Play. Log your address and we send you notifications relevant to your address, like recycling collection reminders, water outages, events etc. You can also use this app to report issues to Council like leaking water mains, tagging, among other things.

Email

You can email Council on info@southwaikato.govt.nz or use the contact forms for both staff and Elected Members via our website.

Phone

We can be contacted by phone from 8am to 5pm on 07 885 0340 (Tokoroa office) or 07 883 7189 (Putāruru office) or The Dog in Tīrau on 07 883 1202. Pop in Our Council offices in Putāruru and Tokoroa are open Monday to Friday from 8am to 5pm. The Dog in Tīrau is open from 9am to 4pm during winter non-daylight saving, and 9am to 5pm once we start daylight saving at the end of September. The Dog is open weekends too.



READ IN TOUCH? PROVE IT...

... and be in to win a lucky dip \$50 supermarket voucher.

We will run this competition every issue. The answers to the five questions below are in this issue – August 2023. You have to get them all correct to be in the draw.

Text your answers and your name to 0274 472 664 or private message our Facebook page by 31 August 2023.

1. How far apart should you place your wheelie bins/ crates?
2. What is the minimum legal tread depth for tyres?
3. What is the new name of the South Waikato Trades Training Centre?
4. How many potential new jobs will be created by the Maraetai Road Intermodal Business Park?
5. What was the final score at the Mooloo Shield final between Putāruru Rugby Club and Leamington?

Congratulations to Angela of Putāruru who was drawn as the lucky winner for the June In Touch competition. Thank you to all those who entered.

Try again this issue!

The correct answers were:

1. brown, 2. pee, paper and poo, 3. yes, 4. any three of the following - walking shoes, warm clothes, raincoat, hat, snackfood, hand sanitiser, portable phone charger, cash, documents, medicines, first aid kit, mask, torch, radio, batteries, waterproof, brush, shovel, windscreen scrapers, 5. Tīrau Domain, 6 May 2023.

Antenno is a mobile phone app that is FREE for users to download from Google Play or the App Store.

Install the app. Input your specific address(es) - home, work, play, and we send you messages relevant to your address. Users can also use the app to report icssues or ideas to us.



Mayor Gary Petley

0274 836 809
Gary.Petley@southwaikato.govt.nz

TOKOROA ward



Hamish Daine
0273 361 676
Hamish.Daine@southwaikato.govt.nz



Rebekah Garner
0273 140 887
Rebekah.Garner@southwaikato.govt.nz



Thomas Lee
0273 178 758
Thomas.Lee@southwaikato.govt.nz



Bill Machen
0274 715 899
Bill.Machen@southwaikato.govt.nz



Maria Te Kanawa
0273 368 750
maria.tekanawa@southwaikato.govt.nz



Josiah Teokotai
0272 121 326
Josiah.teokotai@southwaikato.govt.nz

PUTĀRURU ward



Marie Farrell
0273 369 257
Marie.Farrell@southwaikato.govt.nz



Hans Nelis
0273 365 826
Hans.Nelis@southwaikato.govt.nz



Sandra Wallace
0273 365 094
Sandra.Wallace@southwaikato.govt.nz

TĪRAU ward



Kerry Purdy
0273 364 541
Kerry.Purdy@southwaikato.govt.nz

CONTACT YOUR ELECTED REPRESENTATIVE