

## Annual Plan 2022-23

Council adopted a Long Term Plan last year, covering Years 1 to 10.

Year 1 of this Plan is the current financial year 2021-22 (ie, the year we are in right now). Year 2 of the LTP is the coming year starting 1 July 2022 to 30 June 2023 (ie, Council's next year).

We run our **years** from 1 July to 30 June, not 1 January to 31 December, (ie, financial year, not calendar year).

There are no significant changes to the adopted Year 2 in the LTP and the average rate revenue increase of 7.6%

adopted through the LTP hasn't changed, so Council is not consulting on the 2022-23 Annual Plan.

Despite the complexities of COVID-19 which has caused both supply issues and staffing pressures, we have continued to make progress on various key infrastructure and community projects.

We're working on a document that outlines major projects, significant issues facing Council and local government, current project progress, updates on multi-year projects and initiatives coming up in Year 2.



## Elections 2022 | Te kōwhiringa pōti 2022

The Local Body Elections for the South Waikato District are held every three years by postal vote. The Elections determine who will become the Mayor of the district, Councillors for each of the three Wards and local Community Board Members for Tīrau. Elected Members make decisions on behalf of all in the South Waikato. Four key things for now:

- 1** Election Day is **Saturday 8 October 2022**.  
If you are an enrolled voter, you'll get a voting information pack in the mail. Check or update your postal address to make sure you receive your voting papers.  
<https://enrol.vote.nz/app/enrol/#/check-online>
- 2** If you are not enrolled, please enrol at the link below:  
<https://enrol.vote.nz/app/enrol/#/enrol-online>  
You have to be enrolled to cast your vote.
- 3** Voting papers will be sent to all eligible voters from Friday 16 September 2022.  
Voting will close at 12 noon on 8 October 2022.  
Special votes will be possible.
- 4** [www.southwaikato.govt.nz](http://www.southwaikato.govt.nz)  
ELECTIONS 2022 (just under the search bar)

## IN the know

DID YOU KNOW... the South Waikato community produces an average of 449 kilograms of waste to landfill per person per year. This puts us at the lower end across NZ councils. We are below the national average of 680 kilograms per person.

\* Waste Assessment 2022

## IN side

- 2-5 - Best Loo
- 2-5 - Discover Different
- 6-9 - Choose Local
- 6-9 - Three Waters
- 10-11 - Community News
- 10-11 - When we consult
- 12 - Snippets
- 12 - Councillor Contacts

## IN house

Produced in-house for the South Waikato community by the SWDC Communications Team.

Editorial: Kerry Fabrie, Renee Renata and Anthony Momoemausu, 07 885 0340

Print: GASP Designs

# Leith Place toilets win KNZB Best Loo Award

**South Waikato District Council is thrilled that the Leith Place toilets in the Tokoroa CBD were awarded the Keep New Zealand Beautiful Best Loo Award at the Beautiful Ball awards ceremony in February.**

“As part of the Leith Place Upgrade, Council wanted to create a plaza area for visitors and locals to use, provide parking for shoppers, incorporate the existing Talking Poles into a forest, build new toilets and create a WOW factor to attract passing traffic off the highway,” said Mayor Jenny Shattock.

“We’re very pleased that the KNZB judges saw this WOW factor in the toilets and the wider space.”

The toilets were designed by DCA Architects from Rotorua. The toilet cylinders vary in heights from seven to nine metres and consist of a stand-alone and enclosed toilet at the base, metal framework with wooden fins up its height and a shiny disc on the very top. This projects light back down and through the open fins, creating a dramatic effect at night.

The Leith Place toilets have already won two awards – the Waikato/BoP New Zealand Institute of Architects (NZIA) award and a regional

award from Architectural Design New Zealand (ADNZ). Both wins saw the Leith Place toilets shortlisted in the national awards.

RDT Pacific provided project management services to Council for the re-development of Leith Place. This project offered a significant opportunity to showcase Tokoroa’s qualities to the world, benefit the community and improve trade and visitor experience.

Mayor Shattock invites travellers to stop next time they are passing through Tokoroa to see what all the fuss is about.

“Spend a penny,” she said, “And of course spend a little more with our local retailers – it’s a great spot for a bite to eat, a coffee and to stretch your legs.”

The Best Loo Award recognises the best public toilet in the country. Judges take into consideration the location, facilities, cleanliness, interior, exterior and the surrounding environment.



*Above - the Leith Place toilet cylinders differ in heights and are joined by a covered walkway.*

*Right - the Twilight Block Christmas Party in 2021 showed how the entire space came alive for our Christmas celebrations. Especially stupendous was the nearby Colson’s Hill fireworks exploding over the dramatic night lit toilet towers.*



*Birdseye view of the Leith Place toilet cylinders at night.  
Photo credit Nick Lambert, DCA Architects*

# WHAT'S HOT

We have received 40 applications for the 2022 South Waikato Environmental Initiatives (SWEI) round, the highest ever! There is \$160,000 to allocate this year - \$45,000 (Oji), \$60,000 (Ministry for Primary Industries), \$30,000 (Fonterra, Tirau) and some carryover funding.

Works are well underway at the Tirau wetland with 90% of the civil earthworks complete. Our contractor is currently working on spreading the topsoil and laying the new pipelines connecting the wetland to the wastewater treatment plant and discharge pipeline. We are expected to have the pipeline connected this month and begin planting within the wetland in April.

Our library and digital team processed 2,262 vaccine passes since the first requests came in at the end of November last year. Demand has lessened but we're still processing a handful each week. Pretty good effort to the team for picking up this body of work in response to community need, pretty much on the fly!

In coordination with developers in Putāruru we are bringing contaminated fill from new developments to the landfill site prior to placing a cap on the landfill. The cap is composed of soils excavated from nearby and the aim is to reduce the importation of fill as much as possible. The purpose of the project is to assist local development as part of our commitment to growth and prepare a cap of soil which will provide a stable cover for the long term maintenance of the landfill site.

New government legislation requires a conditions survey and

monitoring schedule be prepared for all dams, including our own Lake Moananui. A consultant will provide this survey and monitoring regime and negotiations are underway to find the most efficient way to include the ongoing survey data with upcoming telemetry upgrades within the Three Waters Assets team. This survey is visual only and includes an assessment of downstream risks to inform town planning as to potential hazards which could exist in the area and allow for informed decision making when it comes to growing the town safely.



Issuing our first red sticker for contamination in the recycling bins is not hot. A yellow sticker was issued in December, orange sticker in January and red in early March. The household's service has been suspended for twelve weeks (six recycling collections). Why you may ask? For putting dirty used nappies in their recycling wheelie bin.

Commercial users that dump commercial quantities of hazardous chemicals at the Hazardous Waste store at the transfer stations. Just a reminder that the cost to manage these hazardous waste stores is 100% on rates. It is for household quantities ONLY. Good examples are a household's left over weed killer or drain cleaner. It is not fair for ratepayers to foot the bill for commercial operators to dispose of large quantities of hazardous waste – this is a business expense. Please contact a hazardous waste operator and set up a regular collection or account.



# WHAT'S NOT



# Dontay takes littering seriously



Meet six-year-old Dontay Wesley, who has taken it upon himself to pick up litter around town when out for walks with his parents Georgia and Brooke. Dontay featured on a community Facebook post recently. Mayor Jenny happened to see the post and commented on just how awesome he was and that she would love to meet him.

Mum Georgia made that meeting happen and Mayor Jenny was fair blown away by what Dontay had to say. He cleans up rubbish to make the world a cleaner place and save the animals and earth as he knows it's dying.

"I asked my grandparents to donate to me so I can give it to sustainable coastlines because every dollar helps remove tons of waste," said young Dontay.

Mayor Jenny was very pleased to have the opportunity to give Dontay a Warehouse voucher as a thank you for his care and efforts.

Young Dontay cleans up whenever he is out and about, even dragging his parents up Colson's Hill for a clean-up there! We caught up with him at Lake Moananui.

People who drop rubbish on the ground instead of putting it in the bin or taking it home with them, could learn a thing or two from a six-year-old!

Dontay, you rock!



# Tirau Domain taking shape

Council has worked closely with the Tirau Community Board and Domain Action Group on the Tirau Domain and Walkway project.

Works on stage one started last year and are finished. Downer has completed the final tidy ups on stage one elements that included ground shaping, pathways, bridge and carpark.

Now this is complete the area is accessible again. We're sure the Tirau community will enjoy their walk from town, across the bridge and into the domain – it's been a long time in coming!

Stage two works have kicked off. This includes toilets and the family fun items - pump track, play equipment, picnic tables and shelter, which will turn the area into a space for everyone to enjoy.

The toilets are complete. They were constructed off site and at the time of reading will have been delivered... although they may not be hooked up and ready for use.

The pump track has been designed and ground clearance is underway.

The team is working with DAG on what playground equipment we can purchase with the remaining budget and the signage.

The Domain is accessible during stage two with smaller sections cordoned off for safety.

We have also started planning an opening event to take place in late May to early June; no firm date yet.



# Public Places Bylaw opens for public consultation

Council is proposing amendments to its existing Public Places Bylaw 2017 and is seeking your views on the proposed amendments.

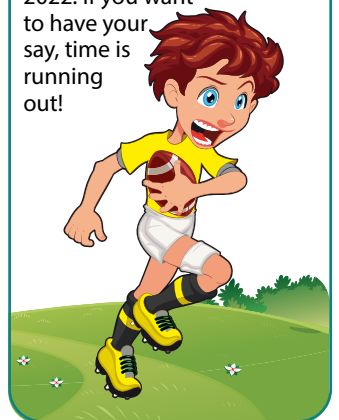
Recent issues brought to Council's attention involve various activities occurring within Council sports grounds in the district, relating to alcohol, littering and antisocial behaviour.

It is Council's view that the most effective way to deal with this behaviour is to extend the current Alcohol Prohibited areas to include all reserves used for sporting purposes in the district.

The purpose of the Bylaw is to control and manage a wide range of activities within public places. Council is responsible for maintaining public places and this Bylaw seeks to ensure the public can continue to use and enjoy public places in going about their everyday business.

Council wants to hear your views on the proposed amendments to the Public Places Bylaw 2017 before decisions are made. Anyone can give feedback on the proposal, including individuals, organisations and businesses.

The submission period opened on Wednesday 16 March 2022 and closes soon on Monday 18 April 2022. If you want to have your say, time is running out!



# DISCOVER DIFFERENT

The South Waikato is full of hidden gems and as locals you know where to find them all. It's been great to see so many people out enjoying what the district has to offer while the weather is still warm.

Last year Council launched a campaign - Discover Different, to showcase some of the incredible things the district has to offer and encourage people to try something different.

From a lazy stroll through rolling bushland where chance encounters with a native bird or two are totally on the cards to crystal clear streams, mouth-watering local cuisine, boutique shopping and quirky nooks and crannies waiting to be discovered.

It's all here in the South Waikato. All just a little bit different.

Some of the top spots we have seen talked about by visitors and users are Jones Landing, the Waikato River Trails and Te Waihou Walkway.

We'd love to see how you discover the district. Tag us in your posts @southwaikato or use #southwaikato. After all, no one knows our district like our wonderful community does.

Below are some awesome pictures of what people have been discovering in the South Waikato. You might even use them as inspiration for your next adventure...



# Choose Local - calling for nominations NOW!

South Waikato is home to many amazing locally owned businesses. They are a big part of what makes our community special and unique. As locals themselves, they are often the first to support community initiatives and generously sponsor our sports teams, clubs and events. Life in red hasn't been easy for them as they continue to feel the effects of COVID-19.

To support local businesses in these uncertain times, Council's Space to Grow team is giving away 12 advertising packages with a winner drawn each week.

Advertising is a great way to promote a business and reach new customers. To win one of these packages local businesses will need your help. To go into the draw, they need to be nominated by someone in the community... that's where you come in.

How to nominate a business:

- Visit a locally owned business.
- Get a photo with the owner or staff.
- Send it to [win@swnz.co](mailto:win@swnz.co) with the business name and date you visited.

If your nomination is picked, you will receive a \$50 voucher for that business.

You can nominate as many locally owned businesses as you like, from your hairdresser to your favourite café. As long as the business is locally owned and you follow the steps above, they can go into the draw to win.

Whenever you can, remember to choose local. By choosing local, you're choosing to support local businesses that keep our community vibrant.

The competition is open to any locally owned business in South Waikato. Nominations close 12 June 2022. All entries can only win once.

For more information and T&Cs email [enquiries@swnz](mailto:enquiries@swnz).



## Nominations close 12 June 2022

NOMINATE A LOCAL BUSINESS TO

**WIN 1 OF 12**  
**ADVERTISING**  
**PACKAGES**

Competition open to locally owned South Waikato businesses. All entries can only win once. Competition closes on 12 June 2022. For more information and T&Cs email [enquiries@swnz.co](mailto:enquiries@swnz.co).

PROUDLY SUPPORTED BY



SOUTH WAIKATO INVESTMENT FUND TRUST

### HOW TO NOMINATE



Visit any locally owned business.



Take a selfie at the business with the owner or staff.



Send your photo to [win@swnz.co](mailto:win@swnz.co) with the business name and the date you visited.

# South Waikato supports Tonga



The people of the South Waikato have once again stepped up with kindness, compassion and cash donations for the people of Tonga following the devastation of the recent volcanic eruption and tsunami.

Our community donated generously to the Tongan Community Appeal initiative led by the South Waikato Pacific Island Community (SWIPC) trust and supported by Council.

We were very pleased to present Mefi Naufahu, Chairperson Waikato Tongan Community Charity Trust with a cheque for \$12,737.30.

"The money will go towards the immediate IT equipment response to support the Government Middle School of Popua and children who were directly impacted," said Akarere Henry, SWIPC Chairperson. The aim of the fund is to:

- Immediately support the Government Middle School of Popua with IT equipment and to support the school readiness for better education before children return from COVID-19 lockdown.
- Strengthen the capacity of the school to effectively provide better education services to help children who were directly impacted by



the volcanic eruption and the tsunami.

- Strengthen the capacity of teachers to successfully provide better quality education to suit the needs of children while their parents are struggling to recover.
- Ensure that the children have access to better and high-tech learning resources.

"The Tokoroa Host Lions also donated \$10,000 to the Tongan Appeal and although no member was present on the day, we were able to present their cheque as well," said Mayor Jenny Shattock.

Ofa Atu.



## School holiday movies:

Tickets limited to 100, no door sales, book through Eventfinda or call 07 883 8596, \$8 adults \$5 students, children under 13 must be accompanied. Shows start at 2pm.

### Wednesday 20 April

**PAW PATROL: Ryder and his team of six intelligent puppies set out to stop Mayor Humdinger from wreaking havoc in the metropolis.**



### Wednesday 27 April

**SING 2: Can-do koala Buster Moon and his all-star cast of animal performers prepare to launch a dazzling stage extravaganza in the glittering entertainment capital of the world. There's just one hitch -- he has to find and persuade the world's most reclusive rock star to join them.**



### Sunday 4 April

**BLACKBIRD (2019): After being diagnosed with a degenerative disease, Lily decides to end her own life. She invites her daughters to spend some time together but things take an ugly turn when differences arise.**

## Spaces for bookings:

The Plaza facility offers a range of spaces to suit an array of events, such as meetings, workshops, conference, performances and shows. Contact the team.



07 883 8596/0276 559 715  
[www.plaza.org.nz](http://www.plaza.org.nz)  
 Email: [theplaza@plaza.org.nz](mailto:theplaza@plaza.org.nz)  
 Facebook: [theplazaputaruru](https://www.facebook.com/theplazaputaruru)

## Lighting up in green!

We celebrated St Patrick's day in the South Waikato by lighting up The Dog in Tīrau in a blaze of green!

St Patrick's Day observes the death of St. Patrick, the patron saint of Ireland. The holiday has evolved into a celebration of Irish culture with parades, special foods, music, dancing, drinking and a whole lot of green.



# Three Water Reform - Update

The Three Waters Reform continues to be a challenge for Council. Many in our community know we're not supportive of the reforms as proposed by Central Government (CG) and that we have joined Communities 4 Local Democracy (C4LD), along with 31\* other councils to pressure CG into looking at alternative solutions.

At the same time, the Government reform process continues to move forward and we need to participate to ensure we get the best outcome for our Council and community. It is a difficult balance. The update below is split into two parts: where the Government reform is at and what C4LD is doing.

## Where the Three Waters Reform is at

Three Water Reforms is a Central Government (CG) managed process. It appears CG's drivers are the state of the three waters infrastructure across New Zealand and the deaths of several people from the Havelock North incident.

It is fair to say that infrastructure into three waters is expensive and a huge burden on ratepayers. It is also correct to say that not all councils have the same quality of infrastructure, systems and processes, nor is councils' investment levels the same.

It is also fair to say that across NZ as a whole, investment into three waters is lower than it needs to be. There has been general acceptance that improvement is needed. The issue a number of councils have is that we don't think CG's proposal is the only solution, nor the best solution.

Our concerns about CG's initial proposal:

- Misleading advertising campaign. Readers will note this has been dropped.
- Ownership, governance, staffing and regulation.
- Loss of local voice.
- Back tracking on the opt in/opt out aspect of the proposal. Councils were led to believe that they could decide to opt out if the reforms were not appropriate for their council. The plug was pulled on this, which has resulted in a level of mistrust.

Our Council has invested significantly in wastewater and water over the years and going forward out to 30 years. We are well placed for the future, but not all councils are. We note too that SWDC has under-invested in stormwater. The current long term plan partly addresses this issue.

The first Reform payment of \$3.88 million has already been provided. This funding was a good faith offering for the massive amount of information we were required to source, prepare and provide about the status of our three waters. We have this funding and we are spending it on wastewater de-nitrification, telemetry, regional collaboration and stormwater.

Further potential funding of \$34 million across offsets, including better-off funding, stranded costs, 'no worse off' based on debt-to-income ratio forecasts and transition (hand over) to be provided at intervals is expected.

It is worth noting that the 'no worse off' payments rely entirely on what our waters debt is relative to our total debt as at 30 June 2024. In Council's submission on the proposal, we stated that we believe these figures are inadequate for SWDC when compared to many other councils that have high debt related to their three waters activities.

## In a nutshell, SWDC's thoughts are:

- Dissatisfied with the CG's proposals.
- Agree that three waters infrastructure is costly and there is room for improvement.
- Working with CG as best we can to maximise the benefits for our community.
- Joined C4LD in an attempt to be heard by CG.
- Protect three waters from privatisation.

**Three Waters is a watch and wait space.**

## About C4LD

Communities 4 Local Democracy – He hapori mō te Manapori consists of a group of 31\* councils (not including SWDC) from around the country, currently representing 1.6 million people from Cape Reinga to the Taieri River and from Haast to Mahia. The group has serious concerns about CG's proposals, in particular losing control of approximately \$60 billion of community owned assets across the country.

## What C4LD is doing

C4LD has commissioned expert advice on alternative models that may achieve the objectives of Government and local communities. Recently the group announced two alternative models:

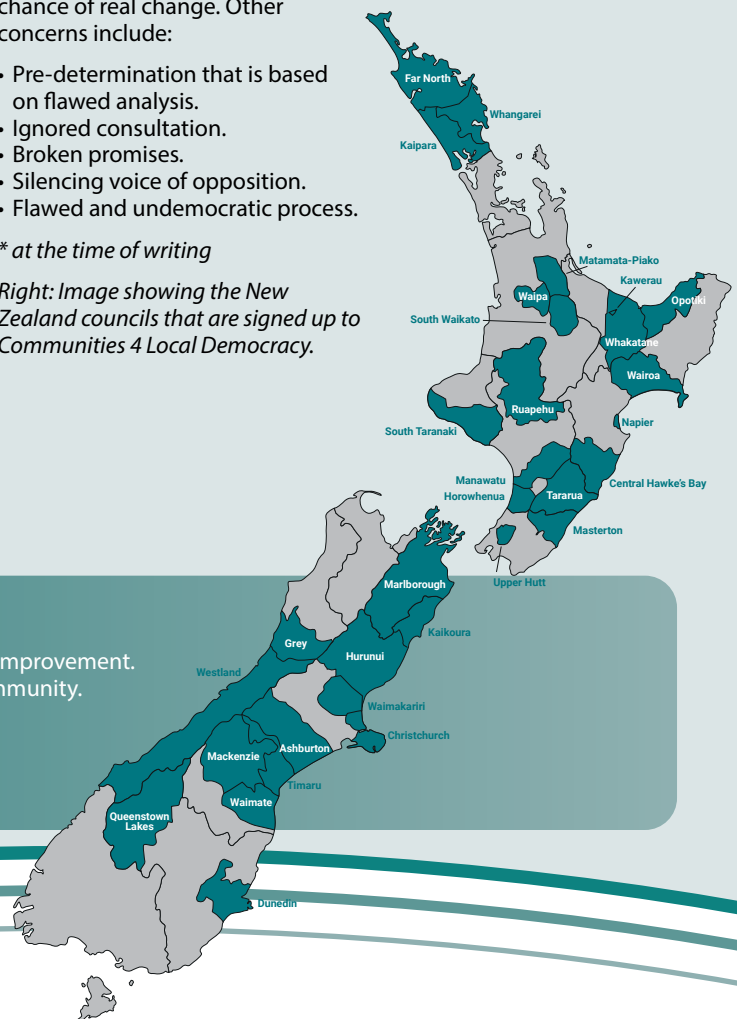
- the **Council owned plus regulation option** that would amend the current local authority owned and operated model with targeted interventions to address financing, funding constraints and credible enforcement mechanisms from water quality, environmental and economic regulators.
- the **Council owned organisation where local authorities would own shares in a regional organisation**. The local authorities would remain democratically accountable to voters and water customers and would exercise appointment rights over the organisation board. The organisation would own and manage the three waters service for the area.

C4LD recently announced its disappointment with the terms of reference for the Government Working Group, saying the scope of the group is so limited that CG has stymied the chance of real change. Other concerns include:

- Pre-determination that is based on flawed analysis.
- Ignored consultation.
- Broken promises.
- Silencing voice of opposition.
- Flawed and undemocratic process.

\* at the time of writing

Right: Image showing the New Zealand councils that are signed up to Communities 4 Local Democracy.





# Overfull wheelie bin? No collection...

Overfilled wheelie bins in our kerbside collections has been a hot topic after a post was put out on our Council Facebook page asking our urban residents to refrain from doing so.

As the saying goes, a few bad apples can spoil the bunch and it is the case here with only a few instances where the EnviroWaste team has encountered these issues.

It's been a divisive topic with residents debating the size of the rubbish bin. One thing is for certain though, Council's contractor won't empty overfilled wheelie bins.

Drivers are instructed not to pick up overfull bins. This avoids items falling onto the road and creating a mess and a hazard for residents and the team on the ground emptying our bins.

In addition, if bins are overfilled and crammed, items can get stuck in the bins when the truck picks them up which may mean your bin isn't completely emptied.

Another issue our contractor has come across has been the number of bins on the kerbside with lids open.

We understand that this might not be directly the fault of the household because wind can be a bit sneaky and blow them affect this, but we're kindly asking residents to double check that their lids are closed when they place their bin at the kerbside.

If the grabber arm picks the bin up with the lid flipped open and over, it can damage the bin.

The majority of people have put in a huge effort since the introduction of the new collection service and for this, our huge thanks.

Some handy tips if you are battling for space:

- Don't use bin bags. Put rubbish straight into the bin. Rubbish bags can fill up with air and take up space in the bin. They can also get stuck to the sides of the bin. Going bagless is cheaper and better for the environment too.
- The size of the bin does not suit everyone. There are some households in the South Waikato with ten people and some with one person. For larger families, supplementing with a private service is an option they can look into - there are a number of private operators. Remember, each ratepayer is only paying for one 120 litre rubbish collection per week on rates. A private service can then be dropped as family circumstances change.



- It's worth noting in the picture above that there are at least two recyclable items in the top... perhaps there are more? Recycling everything you possibly can, also reduces the volume of rubbish in the 120 litre red lid wheelie bin.

## South Waikato National Grid Connection to connect communities



Construction of Powerco's \$43m South Waikato National Grid Connection is underway.

The new connection between Arapuni and Putaruru will deliver reliable electricity supply to connect growing communities in the South Waikato now and into the future.

Once built, the connection will provide a new supply line for the 11,500 customers (and counting) in the area who currently rely on a single transmission line at Karāpiro for their electricity supply.

It also means there'll be enough capacity to meet demand as the region continues to grow.

It's the largest of the electricity distribution company's \$80m investment programme in the region.

Construction will go through until mid-2023.

Traffic management will be in place at times and Powerco thanks customers for their patience while this essential project is delivered.

**Council comment:** Arapuni Road residents have expressed concern over the project and we have received a petition in this regard.

Council understands Powerco considered an alternative route, however it turned out to not be feasible.

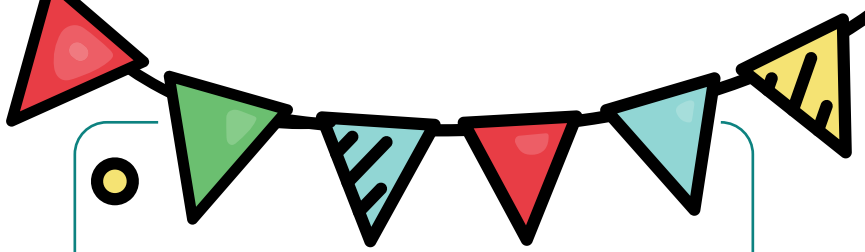
Mayor Jenny Shattock acknowledged the inconvenience Putaruru and Tirau residents have suffered for many years with relying on a single electricity line of supply for many years. This has meant that businesses have suffered and residents have been inconvenienced when there has been a breakdown of that power supply.

"Council and the communities have requested a dual supply for many years and to now have that dual supply come to fruition, I'm sure it will be greeted with acclamation by the Putaruru and Tirau communities."

"As our district continues to grow, the new line will help to ensure that there are fewer outages and the surety of supply will have a positive impact on the economy of both towns."

Please note, this is not a Council project, but affects a number of people in our community and there is a high level of interest in the project.

To find out more visit [www.powerco.co.nz/southwaikato](http://www.powerco.co.nz/southwaikato)

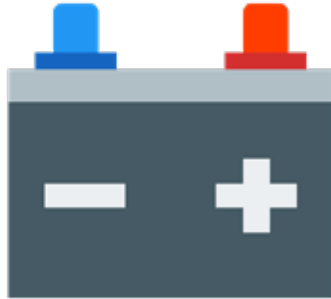


# TALKING ROAD SAFETY

With the long summer days slowly disappearing it is time to start thinking about getting your vehicle ready for the cooler weather ahead. Here a few simple things you can do to reduce your chances of a breakdown over the coming months.

## Check your battery

During cooler weather your battery will work extra hard with cold starts and the constant use of your car's heater and lights which all add extra strain. If your car is already having problems, get your battery checked now. As a backup ensure you have a pair of jumper cables.



## Check tyre condition tyres

Your vehicles tyres are the only contact you have with the road. Ensure your tyres have at least the legal minimum of 1.5mm depth of tread (more is differently better) and are inflated to the correct pressure. Remember snow tyres should only be used in the snow; they are dangerous to use in normal road conditions.

## Clean and check your lights

Check that all your lights, indicators and rear reflectors are clean. Look for blown bulbs or cracked lenses. Also remember to check your lights on full beam as well as any fog lights that may be fitted.

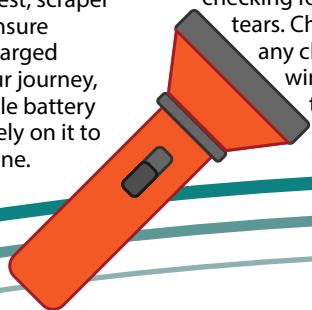


## Wash your windscreen and wipers

Give your windscreen a thorough clean both inside and out and remember to top up your wind screen washer fluid. Check your wiper blades by running your finger down checking for nicks and tears. Check for any chips in the windscreen as these can expand in the cold weather.

## Prepare a winter breakdown kit

Ensure it includes a torch, blanket, hi-visibility vest, scraper and snacks. Always ensure your phone is fully charged before leaving on your journey, remember your vehicle battery may go flat so don't rely on it to help charge your phone.



## Meet the Engagement Team... are you planning a public event in the South Waikato?

Then you will need to know about the Events Process... and the person to help you through the process is our Events Coordinator Tracey Numanga, who sits within the Strategy and Engagement team.

Often a public event will require input from various Council departments before it can be held. Rather than the organiser having to liaise with each department separately, the Events Process does it all.

"When planning a public event, organisers need to be aware of the various requirements they must meet before the event can proceed," said Mrs Numanga.

"These may include updated certification for anyone selling food, or a licence to sell alcohol or a traffic management plan if they are closing a road for safety reasons."

The Events Process takes organisers through each step in planning a public event, such as:

- Health and safety and the COVID-19 restrictions
- Alternative ways to run an event in the current COVID-19 climate
- Risk assessment
- Environmental Health licences



- Parks and reserves
- Roading and traffic management plans
- Council facilities
- Waste management plan.

"Ultimately we empower event organisers to follow the process on their own," adds Mrs Numanga, who organises and plans civic events such as the Waitangi and ANZAC Day Commemorations and Matariki celebrations. "I am simply there to guide them if they need it."



# Antenno

Be informed. Get involved.

Download Antenno for free. Log addresses that are important to you - home, school, rental, mum etc.

We will send you important messages that are specific to your address, like recycling collection reminders, road closures, weather warnings, events among others.

Also you can use the app to report issues to Council, such as water breaks, potholes, streetlighting, flooding, trees down.

## When Council consults...

From time to time, Council formally consults with its community on a range of activities, services, projects, initiatives, bylaws, plans and policies.

Consultation can occur because we're legislatively required to. This is outlined in a number of Acts of Parliament that governs what councils do.

*An example of this is the Long Term Plan that we consulted on last year.*

Consultation can also occur because the issue is of high public interest or high cost.

*An example of this is the consultation we did several years ago on introducing wheelie bins. The move away from bags to wheelie bins has a high level of public interest, affecting every urban resident.*

*An example of a project that is consulted on due to high cost was when we asked for community submissions on closing the landfill to build a transfer station or build a new cell to keep the landfill operating.*

When Council consults, we use a range of tools to capture as many people as possible. We advertise in our local newspaper, use our community newsletter In Touch (if timing allows), radio, social media, our mobile phone app Antenna, posters, flyers and a number of other tactics.

Our Engagement Team adds value in this space as they are the team that gets out into the community at grassroots, through events, workshops and community meetings. This added value takes Council's consultation material directly to the people.

Our Elected Members too are active in this space as they are often a point of contact for the community.

All consultation material is made available on our website [www.southwaikato.govt.nz](http://www.southwaikato.govt.nz) – COMMUNITY ENGAGEMENT (just under the search bar).

Make the link above a favourite and keep checking in. We haven't always got something open for consultation but when we do, it would be great to hear from you.

kōrero mai  
now we're  
talking...

Look for this image... it means we want to hear from you!

## Hospice and its helping hands



The Tokoroa Community Hospice is a non-profit organisation providing care, support and specialised equipment for terminally ill people and their families within our community.

Serving the South Waikato since 1995, the hospice is part of a wrap-around support system of services which include district nursing, occupational therapists, Tokoroa Hospital, Hospice Waikato, medical practitioners and health care assistance.

Terminal illnesses cover a range of non-curable and end-of-life diseases. Many people who are terminally ill and their families are faced with the decision of how they will be looked after. This places a lot of stress on caregivers and their immediate and wider whānau. Hospice can assist by making sure they have the availability of equipment, support, guidance and care that they need at this difficult time.

Services provided are at all times confidential and free of charge. Families are welcome to make direct contact for assistance.

Hospice Tokoroa has recently amalgamated with the Putāruru Friends of the Hospice to help fill the increasing need for palliative care in the South Waikato. This service and the use of equipment will remain free of charge.

All donations will continue to be used for upgrading servicing equipment to support people in our community.

The Putāruru Friends of the Hospice has been serving the community since 1983. They have provided a great service to Putāruru/Tirau and surrounding areas. Over the years equipment has been purchased and services have been provided through the generosity of donations from the community.

The Tokoroa Community Hospice has helped in recent years to cover the Putāruru/Tirau/Arapuni areas. Combining the two organisation's resources and equipment will provide continuity and inclusiveness.

For more information or support: Vicki Ray on 027 242 8338 (Tokoroa) or Gillian Robbins on 027 292 5647 (Putāruru).

## Putāruru Community Garden Update

The team at the Putāruru Community Garden has just undertaken a comprehensive survey improve what they do at the Putāruru Community Garden. The survey covered picking, packing and delivering the vegetables they supply to over 100 people, 40% of them are children – great to see them eating fresh vegies!

They wanted to know if they were growing what people wanted at the right quantities; how/if waste was being avoided, other agency support and improving deliveries during COVID-19/Omicron.

People interviewed were helpful and comments encouraging:

- "awesome great for the community"
- "very grateful as it helps so much"
- "amazing service and help, thanks, blessings to you all"
- "appreciate recipe with soup pack, very thankful"

We also learnt that people pass on to others anything they don't want so that answered the team's waste query!

Tomatoes, cucumbers, courgettes and beans are coming to an end now, so the

team is planning planting for Autumn and Winter meals, including soups which were so popular last year. The team has had practical support with running a raffle which provided enough funds for soup packs during July and August, the coldest winter months.

As with Level 4, the Gardens are considered an essential service, so will continue while Omicron is in the community. Numbers of people in need is increasing. The team has a waiting list as they can only produce and distribute so much.



## IN brief

- Waka Kotahi's Procedural Audit Report showed our roading team achieved the highest score possible.
- The impacts of Cyclone Dovi - fallen trees, surface flooding and streetlight failures were cleared quickly by contractors - thank you.
- Patronage and income for pools and libraries is significantly lower than usual.
- Planning is underway for the upcoming winter tree/shrub planting programme.
- Interest in the Warm Homes Clean Air programme is increasing due to the promotion campaign and with winter approaching. 38 Split the Bill applications have been processed year to date (YTD), with 17 awaiting install; and ten Buy Now Pay Later applications are complete with a further five awaiting install.
- Grant applications for Community Development Grants and Creative Communities is currently open, closing on Friday 29 April 2022.
- Year to date (YTD), Council has received 8,527 service requests, an increase over 2021 YTD (7,520). The top two issues in January and February reported were water leaks and repairs and noise complaints.

## IN the know

You can keep up to date with Council information via:  
[www.southwaikato.govt.nz](http://www.southwaikato.govt.nz)  
[www.facebook/SouthWaikatoDistrictCouncil](https://www.facebook.com/SouthWaikatoDistrictCouncil)  
Download Antenna FREE  
[info@southwaikato.govt.nz](mailto:info@southwaikato.govt.nz)

## IN view

If you would like to receive this newsletter in electronic format please email [kerry.fabrie@southwaikato.govt.nz](mailto:kerry.fabrie@southwaikato.govt.nz).

## Councillor Column - Peter Schulte

It's getting colder out there and we all need to get ready for the winter.

As I wrote this column we were having our first rain downpour in several weeks. I am sure that our farmers and gardeners will appreciate it.

The first stage of the Tīrau Domain project is complete. Downer will continue with stage two which includes toilets, playground and pump track. Built off site, the toilets will be installed once the ground works are finished and the septic tank installed.

An opening celebration of the Domain will be in May or June and hopefully the pump track for our youth will be done by then for youngsters to give it a go!

The suspension bridge over the Oraka Stream is finished and it looks amazing. Here's a photo taken part way through the construction.



This wouldn't have been possible without the work by the Domain Action Group, Tīrau Community Board and Council. Special thanks to Council staff and of course Downer as the contractor.

We can all be proud of what has been achieved. It took a while, but good things do take time.

ANZAC Day Commemorations this year are still up in the air with COVID-19 around, but we will let you know what's happening closer to the time.

That's it from me. Keep warm and stay safe.

## Councillor Column - Sanda Wallace

What will 2022 bring? It's been pretty cool so far.

I was happy to help out with the recent Amazing Race organised by Pride In Putāruru. As the usual annual food and water festival couldn't happen this was an awesome alternative enjoyed by many. Pride in Putāruru has done a great job in firstly changing its usual float parade to taking it to the community with four mini float parades and then the Amazing Race.

As a member on the Putāruru skatepark steering group, I am pleased to say we are making great progress here. Other projects coming up are our free wifi in Tīrau CBD firstly and then onto Putāruru CBD. New wetlands underway in Tīrau then onto Putāruru.

I recently attended a morning tea at Council where we presented donations to go to Tonga, on behalf of the SWDC, SWPIC and the Tokoroa Lions. Funds will buy technology for children in a village that have gone through the recent disasters.

We still don't have any real answers for the Three Waters outcome, but rest assured Council is still on the same page opposing what's been proposed.

Council, under our economic development team, is running a Choose Local campaign where we are encouraging people to take a selfie with their favourite business to enter the weekly draw. A business will be randomly drawn to win a free marketing package which includes radio, paper and social media. So support local everyone.

A great promo for our local businesses. This will be running for 12 weeks from 21 March through to 27 June.

Be safe and may 2022 be an awesome year for you all.



**Mayor Jenny Shattock**

0274 416 230  
Jenny.Shattock  
[@southwaikato.govt.nz](https://www.facebook.com/southwaikato.govt.nz)

## Tokoroa Ward



**Bill Machen**  
Deputy Mayor

0274 715 899  
Bill.Machen  
[@southwaikato.govt.nz](https://www.facebook.com/southwaikato.govt.nz)



**Arama Ngāpō**

0275 339 988  
Arama.Ngapo  
[@southwaikato.govt.nz](https://www.facebook.com/southwaikato.govt.nz)



**Thomas Lee**

0273 321 292  
Thomas.Lee  
[@southwaikato.govt.nz](https://www.facebook.com/southwaikato.govt.nz)



**Marin Glucina**

0210 284 3214  
Marin.Glucina  
[@southwaikato.govt.nz](https://www.facebook.com/southwaikato.govt.nz)



**Hamish Daine**

021 125 9225  
Hamish.Daine  
[@southwaikato.govt.nz](https://www.facebook.com/southwaikato.govt.nz)



**Alex Jansen**

0279 581 906  
Alex.Jansen  
[@southwaikato.govt.nz](https://www.facebook.com/southwaikato.govt.nz)

## Putāruru Ward



**Sandra Wallace**

0210 291 3702  
Sandra.Wallace  
[@southwaikato.govt.nz](https://www.facebook.com/southwaikato.govt.nz)



**Hans Nelis**

0210 552 306  
Hans.Nelis  
[@southwaikato.govt.nz](https://www.facebook.com/southwaikato.govt.nz)



**Gary Petley**

0274 836 809  
Gary.Petley  
[@southwaikato.govt.nz](https://www.facebook.com/southwaikato.govt.nz)

## Tīrau Ward



**Peter Schulte**

021 434 933  
Peter.Schulte  
[@southwaikato.govt.nz](https://www.facebook.com/southwaikato.govt.nz)