

Mayoral Scholarships awarded

Mayor Jenny Shattock was proud to announce the recipients of the two South Waikato District Council Mayoral Scholarships at the schools' respective prize-giving ceremonies held in November.

Congratulations to Lahaina Solomon of Tokoroa High School and Dong Mei Lim of Forest View High School who were the successful candidates.

Miss Solomon and Miss Lim were each awarded a \$10,000 scholarship, payable at \$2,500 per year for a maximum of four years, depending on their course of study.

"We received fourteen applications this year from exceptional South Waikato students," said Mayor Shattock. "Deciding which students to award these scholarships too is, without doubt, one of the toughest jobs I have as Mayor."

Applicants indicated interest in a range of degrees such as management, law, arts, science, health and engineering. Seven students were shortlisted and interviewed by the interview panel of Mayor Shattock, Deputy Mayor Jeff Gash, Council's Human Resources Manager Christine Beach and Gateway Coordinator Diane Collins.

"It is always one of the best days at the office when we get to interview such fantastic young people," said Mayor Shattock. "The students all displayed such maturity, determination and ability. For many this is their first formal interview and that can be very nerve-wracking!"

Miss Lim, who will be undertaking an Engineering Degree at Auckland University

next year said that finding out she had won one of the scholarships was a great feeling.

Miss Solomon said she wasn't expecting to hear her name called so it was a really nice surprise. She will be putting the scholarship towards her Clinical Psychology Degree starting next year at Waikato University.

"Special congratulations to

Lahaina and Dong Mei; you interviewed exceptionally well, have all the credentials; and will surely do yourselves, your school, your Council and your district proud.

"I am confident that the future of the South Waikato is in very good hands after seeing the calibre of students that we have in our schools," concluded Mayor Shattock.



IN brief

- The business mentorship programmes ACTIVATE and INCUBATE are progressing well. Participants in the programme are spread across the district.
- Under the Warm Homes Clean Air schemes, 16 homes have been retrofitted under Split the Bill and eight under Buy Now and Pay Later.
- Community Development grants valued at \$33,037.82 were provided to six applicants for community events and projects.

IN side

- 2&3 What's Hot, what's Not Mayor's Message
- 4&5 Putāruru Growth Plan What to feed ducks
- 6&7 Christmas office closure Easter Trading update
- 8 Changing intersection Councillor contacts

IN house

Produced in-house for the South Waikato community by the South Waikato District Council.

Editorial: Communications staff, Kerry Fabrie and Sina Tolovae, 07 885 0340

Print: GASP Designs

WHAT'S HOT

The Taniwha was pretty hot! Albeit a pretty 'urgh' day weather wise with torrential rain in the morning, but hats off to the many lovely volunteers who were standing out in the lousy weather marshalling and manning the stop off tents. A great effort and events like the Taniwha are not possible without these volunteers. You guys rock!

Awesome to see local businesses supporting local sporting teams. There are heaps already and here's a new one: McKays Electrical are sponsoring the Tokoroa AFC Senior Women's Team. Great local support from a local based business.

The LTP engagement sessions - what fantastic responses. All up around 300 people attended these sessions.

The Take a Kid Fishing event organised by the Tokoroa Sports Fishing Club was a spectacular success. Hats off to the committee for putting this event on for our community. A growing number of kids registered for the event. The fireworks event in the evening proved a massive success. Council is proud to support this event through our Community Grant funding.

A new junior playground is in the works for Lake Moana Nui. We have received lots of positive feedback from our community and look forward to getting this installed for our little ones to enjoy!



The seasonal pools in Putāruru and Tirau are open. Putāruru Pools are open weekdays between 12noon and 1pm for lane swimming and then from 3 to 6pm for recreational swimming, and weekends from 12noon till 6pm. We are also trialling early morning lane swimming between 6.30am and 7.30am each Tuesday and Thursday. The Tirau pools are open weekdays from 3 to 6pm for recreational swimming, and weekends from 12noon till 6pm. Once the school holidays start the pools are open each day from 12noon till 6pm.



Forest View High School Year 9 and 10 students were presented with Mayoral Awards for their tremendous achievements. Mayor Jenny said that these are not given out lightly - they are earned. The students have to achieve 380 merit points. Mayor Jenny also commented that good study habits and commitment in junior years will lead to improved performance in their senior years.

WHAT'S NOT

All the roadworks - sorry everyone, but the team does need the dry weather, so there will be a significant number of roadworks happening - both from Council on local roads and NZTA on State Highways. And let's remember, we do all want the roads repaired! Drive with care. Allow for extra time. Look for alternative routes. Above all - be patient.

CHRISTMAS MESSAGE FROM THE MAYOR

A year on, and what a year it has been! A busy, exciting, sometimes frustrating and challenging, but always learning year and one in which I am privileged to have led a team of dedicated elected members. It only seems like yesterday that I was writing my last Christmas message!



Councillors are working well together, having robust discussions and making brave decisions. For many years, our Council has been in a period of consolidation, but all that is changing. Business and residential growth is here and we must take advantage of this while balancing community wants and needs with affordability.



Our Council is focussed on Growth, Relationships and Resilience. We must ensure sustainable growth and foster community pride. Our resilience must be multi-pronged with sound financial management, quality infrastructure, environmental protection and affordable rates.

Building strong relationships with iwi, Pacific people, business and community groups and other sectors is crucial to our continued success as a district.

Our economic profile is trending strongly upwards, our business profile is growing, we launched our Business Prospectus and we have completed the Putāruru Growth Planning project. This has moved into a formal District Plan Review re-zoning process which is very exciting. Growth planning is a focus across the district.

Three projects that have been on the books for a while are all nearing exciting stages. It is important that Council does due diligence, research and robust planning before starting construction which can appear to take a long time. We are all looking forward to the new skate park in Tokoroa and the Leith Place development breaking ground. The Tirau Walkway too is a project that has been stalled by factors beyond Council's control - we're just about there, and look forward to these projects heading for completion.

The Tirau Outhouse is a welcome addition to Tirau. Our community enjoyed an excellent Balloons Visit South Waikato event. We introduced free public Wifi in the Tokoroa CBD, coupling this project with CCTV cameras in Tokoroa and Putāruru.

Council introduced a new mobile phone notification app Antenna and a new library management system that has an improved functionality. A small change to the Mayoral Scholarship meant we were able to award two scholarships this year.

Over the past year we have taken a firm stance on the Healthy Rivers Plan Change. Our Council agrees with the aspirations of the proposed plan change to clean up our rivers, but the cost of this proposed legislation on our community we feel is too high so we have taken the lead to work with other parties in a submission to Regional Council. We hope we will have success although the outcome of the plan change process is several years away.

Four times a year we survey our communities for feedback on council operations and this last year we were pleased that our Customer Perceptions Survey showed an overall satisfaction rating of 88% of council services. This is an increase of 8% over last year.

Our Long Term Plan engagement with our communities was based around our new goals of growth, resilience and relationships. We held 14 meetings all up including public meetings in Tokoroa, Putāruru, Tirau and Arapuni and targeted sector meetings including Pacific Islands, Māori, education, business, health, elderly, sports and clubs and Raukawa. These sessions were tremendous and certainly showed that targeted engagement is the best way to go.

Finally I want to acknowledge the many people and groups in our community who volunteer so much of their time and energy. Council cannot build resilient communities and district without the help and support from those who live here and we look forward to a continued and positive relationship with you.



Christmas is upon us and as we head for the Christmas break I ask that we all pause and remember just what Christmas is really about. Too often with all the hype and commercialism we can easily forget the message of peace and goodwill. That means not only peace in the world but peace in our homes. Lets have a Christmas in the South Waikato devoid of any violence. What a great Christmas that would be.

I would like to wish every resident a restful and safe break over the festive season. It's a great opportunity to slow down, smell the roses and enjoy the sunshine.

Have a safe Christmas break with family and friends.

Mayor Jenny Shattock



New Library Management System is Live



Our new Library Management System with Kōtui is live!

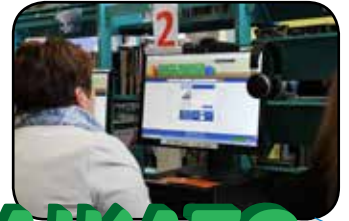
We had a fantastic opening on 2 November. Thank you to all who came to celebrate with us.

The new management system is easy to use and allows users to do searches using a familiar 'Google-like' interface across both physical and online resources held or subscribed to by the libraries.

If you haven't checked it out already, head on over to:

<https://southwaikato.kotui.org.nz>

and give it a go!



Putāruru Growth Plan - where are we

After 20 years of population decline, the South Waikato is seeing an increase in population; but that comes with a shortage of houses and land on which to build new houses.



Council is looking at growth across the entire district; indeed one of our focus areas for the coming three years is Growth.

We did however start this process in Putāruru because some development was already underway and the community group Putāruru Moving Forward were very keen to work with Council through a growth planning project.

In July this year, the initial community engagement part of the process was completed and Council confirmed go-ahead to fund and start an accelerated programme of work to 'change' the South Waikato Operative District Plan to re-zone selected areas of rural and rural-residential land in Putāruru for residential and business purposes. This is called a **plan change**.

An alternative process called the Streamlined Planning Process (SPP) is available to Council,

so long as certain steps can be met to the satisfaction of the Minister for the Environment.

Over the coming months, the Working Party will carry out

further technical and planning evaluations to those completed by Putāruru Moving Forward (PMF) for each of the nine selected sites identified in

the Putāruru Growth Plan prepared between October 2016 and June 2017.

The group will continue to evaluate each site in terms of:

- ability to be serviced through extension to the town's three waters networks (water, wastewater, stormwater) and provide for roading network extensions, and
- establishment of overall network capacity and performance and general costings to achieve residential and business development over time.

Some sites may be better suited to development ahead of other sites, and decisions will then need to be made whether to earmark those other sites for development further into the future, but not right now.

To determine an area's suitability, each site will be 'planned out' at a high level to see what road and infrastructure services are required and where they might be located along with, for example, public parks and spaces that will 'wrap around' the new residential areas.

Modelling of the three waters needs to service each area and integration with the town's existing networks will be a critical task over the coming months. This exercise will be completed by Watershed Engineering Limited supported by Council's own engineering staff. This work kicked off in October.

"We are very fortunate in having a supportive community that is passionate for progress to be made..."

Jenny Shattock
Mayor



Visit www.southwaikato.govt.nz - Our Council - Major Projects - Putaruru Growth Plan to download our regular newsletter or sign up to our distribution list



TOKOROA SKATEPARK BROUGHT TO LIFE IN 3D

Get in and explore the 3D model of the future Tokoroa Skatepark. You can check out the design on any device, any where you are through the Kubby website (www.kubby.com/p/dKAVT9).

Richard Smith of Rich Landscapes delivered his 3D model of the Tokoroa Skatepark to Council at the end of October. The design has been met with fantastic feedback from both Council and our community.

"We're stoked with the feedback we have received," commented Tokoroa Skatepark Project Manager Sarah Flavall. "It's obvious Rich is on the right track with his design and we can't wait to get the build underway."



Rich Landscapes is now going over the feedback from Council staff and wider community and will be finalising the design over the coming weeks. The build is expected to start in February 2018.

"We want to remind our community that the basketball component will be part of Stage Two of this project. We will consult with you before this gets underway," said Flavall.

Keep an eye on Council's Facebook page for updates and more!

"The 3D model looks amazing," said Evan Dickenson, Tokoroa Skatepark committee member. "Rich has done a great job with the feedback he got from the first workshop we had with him. With a few minor tweaks to some of the areas I think we will end up with a great skate park for the youth of the town and the surrounding areas. This will be another great asset in this district. Ka pai SWDC!"



"MASSIVE!
WE'LL HAVE TO MAKE A TRIP
HOME FOR THE OPENING."
- FACEBOOK USER

Keeping our ducks safe

Feeding ducks down at Lake Moana Nui is a favoured pastime for many in our community, but did you know that feeding bread to our waterfowl actually does more harm than good and creates many problems for the birds and other lake inhabitants.

Bread and similar products such as crackers, chips and popcorn offer little nutritional value for waterfowl - in fact, bread is the equivalent to junk food for birds.

Not only can bread be fattening to ducks and make it harder for them to fly and evade predators, feeding ducks bread can also lead to other serious problems.

Soggy uneaten bread can mould and rot in the lake which can lead to pollution and diseases such as *Avian Botulism*.

Avian Botulism is a disease that causes birds to be paralysed and often results in death. Last summer we saw an increase in dead ducks found at Lake Moana Nui, and it is possible that *Avian Botulism* was a factor in this.

People are encouraged to make sure pets don't eat dead fish or birds.

Signs have been erected at Lake Moana Nui with helpful information around feeding our ducks.

So what can we do?

We can help reduce the risk of *Avian Botulism* in our lake and keep our ducks healthy by:

- Not feeding the ducks at all, it's better to encourage waterfowl to forage naturally.
- If you do wish to feed the ducks, please do so on land. See the list below for what ducks can eat.
- Don't feed the ducks bread, it can rot in the lake and promote the growth of *Avian Botulism* bacteria.
- Call Council when you see a sick or dead duck - detailing the specific spot is useful information. We appreciate that many in our community are really helpful in this regard. Leaving contact details so we can confirm the area if we're unclear will also be useful. Council continues to appreciate it when people call up to report dead ducks as it can be a distressing sight.



THANK YOU FOR NOT FEEDING US BREAD.

Ducks Can Eat:

Cut seedless grapes, cooked rice, birdseed, peas, corn, oats, and chopped lettuce.



Council Christmas Closure Hours

COUNCIL OFFICES

The Council offices in Tokoroa and Putāruru* are closed from 3pm on Friday 22 December 2017 and will reopen again at 8am on Wednesday 3 January 2017. Council can be contacted for all queries on 07 885 0340 (water, sewerage, noise, environmental health and building). For dog issues phone 07 885 0774.

Putāruru Library opening hours are below.

	Fri 22 Dec	Sat 23 Dec	Sun 24 Dec	Mon 25 Dec	Tue 26 Dec	Wed 27 Dec	Thurs 28 Dec	Fri 29 Dec	Sat 30 Dec	Sun 31 Dec	Mon 1 Jan	Tues 2 Jan	Wed 3 Jan
SWSEC*	open	closed	closed	closed	closed	closed	closed	closed	closed	closed	closed	closed	open
Tokoroa Library	open	open	closed	closed	closed	open	open	open	open	closed	closed	closed	open
Putāruru Library	open	open	closed	closed	closed	open	open	open	open	closed	closed	closed	open
Tirau Library Link	open	open	closed	closed	closed	open	open	open	open	closed	closed	closed	open

*unless bookings arranged prior

POOLS

The South Waikato Indoor Pools are open during the festive season from Monday to Friday from 5.30am to 8pm and on weekends and public holidays from 7.30am to 8pm, except for:

- Open on Christmas Eve (Saturday 24 December) but we close early at 3pm
- Closed on Christmas Day (Sunday 25 December)
- Open on New Year's Day from 12 noon (Sunday 1 January)
- Open on New Year's Eve (Sunday 31 December) but we close early at 6pm

The seasonal pools in Putāruru and Tirau are closed on Christmas Day and open every other day from 12noon to 6pm, except Christmas Eve when we close early at 3pm.

REFUSE AND RECYCLING

Collections for the Christmas and New Year period are NOT affected. The Tuesday collection will remain on Tuesday, both after Christmas and New Year.

Residents - please note the Tokoroa Landfill, Putāruru Transfer station and the Croad Place Recycling Centre will be closed on Christmas Day and New Years day. District recycling centres are available for excess recycling. These sites will be cleared daily.

There is no change this year! Put your rubbish and recycling out as normal.

	Fri 22 Dec	Sat 23 Dec	Sun 24 Dec	Mon 25 Dec	Tue 26 Dec	Wed 27 Dec	Thurs 28 Dec	Fri 29 Dec	Sat 30 Dec	Sun 31 Dec	Mon 1 Jan	Tues 2 Jan	Wed 3 Jan
Tokoroa Landfill	open	open	open	closed	open	open	open	open	open	open	closed	open	open
Putāruru Transfer Station	closed	open	open	closed	open	closed	open	closed	open	open	closed	open	closed
Croad Place Recycling Centre	open 8am-4pm	open 9am-1pm	open 9am-1pm	closed	open 9am-1pm	open 8am-4pm	open 8am-4pm	open 8am-4pm	open 9am-1pm	open 9am-1pm	closed	open 9am-1pm	open 8am-4pm

Council wishes residents a wonderful holiday break.

Relax, bask in the warm weather, enjoy the beautiful walks we have in the South Waikato and above all drive safe, play safe and stay safe.



We have some great regular events on that the community can get involved with:

Mah Jong: Mondays, 1pm.
Contact Marie Way 883 6820

Putaruru 50+ Group:
Tuesdays, 1pm. Contact Leo Houben 883 8518

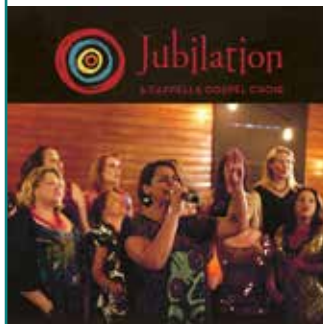
Putaruru Plaza Indoor Bowling Club: Thursdays, 7.30pm (March-October 2017)
Contact Julie Still 883 3197

South Waikato Country Music: usually fourth Friday of each month BUT the next date is 15 December 2017 at 7pm

South Waikato Grey Power: last Thursday of every second month from 1.30pm.

There is no monthly movie in December 2017 however monthly Sunday movies will start on 28 January, continuing on the last Sunday of each month for 2018.

Our first scheduled event for 2018 is **Jubilaton** on 24 February, 7pm. Tickets on sale for \$30 from Eventfinda, The Plaza, iSite Tokoroa and Diamond Jewellers Matamata.



Jubilaton is a unique beast – a 33-strong acapella gospel choir with a rock & roll heart.

The South Waikato Arts Trust and The Plaza Staff wish you a happy and safe holiday. The Plaza will be closed over the holiday season from 22 Dec 2017 to 29 January 2018.

Email - theplaza@plaza.org.nz,
Phone - 07 883 8596



Trading on Easter Monday... yes or no? What did you say...

Council recently conducted public and targeted engagement on whether or not to introduce an Easter Trading Policy to allow businesses to trade on Easter Monday.

This engagement included making contact with churches in the district, emailing business networks and advertising and social media with the wider public with a link to a survey and all the information was on our website.

Council received 143 responses. We want to thank all those who took the time to let us have your thoughts. Council was wanting a steer from its community regarding this issue. Feedback results were however fairly well balanced with 77 (53.85%) respondents being in favour of retailers being allowed to trade on Easter Sunday while 66 (46.15%) respondents did not see the need.

The split on the question of yes or no was fairly even.

Those opposed to allowing Easter Sunday trading felt the day should be kept sacrosanct.

Many people opposing Easter Sunday trading were not basing their opposition on religious reasons, but more so on having another day, like Christmas Day, free from commercialism and a family day.

Those in favour believed that a policy should be introduced so that businesses could trade should they wish to, to attract

tourism and business and to address disadvantages to local traders in not being permitted to trade.

At the time of writing this update, staff were compiling a report to Council to consider the feedback and make a decision about whether or not to progress developing a policy at this time or not.

We will advise our community of Council's decision once known.

If Council decides to introduce a policy, there will be further opportunity for submissions as part of the formal consultation process. Or Council may decide not to introduce a policy for the coming Easter - we can of course revisit this.

The introduction of a policy would mean that shops in a defined area eg Tirau town centre or Leith Place could decide whether or not to open for trade without penalty.

Once again, if you voiced your opinion on this topic, thank you.



Intersection Observation... not that flash!

Results from an intersection observation carried out in September in Tokoroa highlighted some disturbing driver behaviour!

A total of 76 vehicles were seen over an hour period at a T-intersection.

Of these, 20% of drivers failed to indicate, 8% were distracted by either using a mobile phone or eating; and seven drivers were observed not wearing a seatbelt.

Basic rules... that, when broken have dire consequences.

- Indicate when you approach an intersection - it lets other road users know what you're planning to do!
- Do not use your cell phone while driving - in New Zealand 15 per cent of all road crash insurance claims relate to driver distraction - most of which are cell phone-related.
- Wear your seatbelt - driving at 50km and hitting someone going 50km, means the impact on you and your body is 100km/h. You will be hurt, perhaps seriously.

Why wear a seatbelt?

The idea of a seatbelt is simple - it keeps you from flying through the windshield or toward the dashboard when your car comes to an abrupt stop.

But why would this happen in the first place? In short, because of inertia.

Inertia is an object's tendency to keep moving until something stops it.

Anything that is in the car, including the driver and passengers, has its own inertia, which is separate from the car's inertia. The car accelerates riders to its speed. Your speed and the car's speed become pretty much equal, so you feel like you and the car are moving as a single unit.

But you're not a single unit. If the car were to crash into a pole, the force of the pole would bring the car to an abrupt stop,

but your speed would remain the same.

And here's the crucial bit about this article.

From the moment of car impact, without a seatbelt, it takes just 0.02seconds for you to either slam into the steering wheel, bang into the dashboard or go flying through the windshield. Just as the pole stopped the car, the dashboard, windshield or the road will stop you.

Something has to stop your inertia. Depending on this 'something', you could be killed instantly or walk away unscathed.

Question is what is that 'something'. Is it the dashboard? Windshield? Road? Or a seat belt?

Well that's really up to each one of us, isn't it?

Plaza to get new curtains

Council and the South Waikato Arts Trust will be working together to install new stage curtains at The Plaza.

"We're thrilled that Council will be contributing to the replacement of the curtains," said Bobbi Sheriff, Chair of the Trust.

The curtains are in need of replacement due to deterioration over the years. New curtains will mean improved focus on Health and Safety regulations relating to fire protection too.

The Trust and Council are jointly funding the project, with Council contributing \$12,700 towards what is likely over a \$30,000 project.

The Putāruru Plaza has been identified as a significant regional facility.

"We're all looking forward to 'opening' the brand new curtains!," continued Mrs Sheriff.

IN brief continued...

- Information sessions for the Engineering and Logistics & Distribution courses for 2018 were held during November.
- User numbers at the South Waikato Sport and Events Centre continue to rise. The first four months of this financial year has seen 22,145 people enjoy functions and events at the facility, compared to 16,372 people over the same period the previous financial year.
- User numbers at the pools are also increasing from 23,240 to 24,867, financial years to date.
- The warmer weather has meant that roading teams are able to repair potholes across the district. We encourage our community to be patient at roadworks, both on local roads and state highways.
- A retaining wall was installed in the open drain between Montgomery Crescent and Arapuni Street to prevent further erosion.
- A 1.1 kilometre stretch of road rehabilitation of Old Taupo Road to address the deteriorating pavement and lack of drainage started in August and was completed in October.

IN the know

You can keep up to date with Council information via:
www.southwaikato.govt.nz
[@SouthWaikatoDC](https://www.facebook.com/SouthWaikatoDistrictCouncil)
info@southwaikato.govt.nz

IN view

If you would like to receive this newsletter in electronic format please email kerry.fabrie@southwaikato.govt.nz.

THIS intersection is changing!

INTERSECTION - Old Taupo Road • Galaxy Road

New intersection layout and signage



Current intersection layout and signage

These two Give Way signs (on Old Taupo Road) will be REMOVED and road markings ADJUSTED!

Key Changes

Give Way signs on Old Taupo Road will be removed and road markings adjusted.

This means that traffic on Old Taupo Road will have right of way.

Traffic on Galaxy Road MUST still Give Way at all times to traffic on Old Taupo Road!

Drive with extreme care while we all get used to the new layout!

Please don't swim in the Blue Spring

Swimming in the Blue Spring environment is discouraged due to the damage it is causing.

Please join us as kaitiaki (guardians) to do what you can to ensure the beauty and clarity of the Blue Spring is protected for this and future generations. Let's work together to protect this taonga (treasure).

We encourage all visitors to take in the beauty of this area and enjoy its pristine waters, but please refrain from swimming within the Blue Spring and surrounding environment.



Mayor Jenny Shattock

Phone: 0274 416 230
 Email: jenny.shattock@southwaikato.govt.nz



Tokoroa

Wendy Cook

Phone: 021 719 093
 Email: wendy@pockets.co.nz



Jeff Gash

Phone: 021 974 327
 Email: jeff.gash@outlook.com



Marin Glucina

Phone: 021 284 3214
 Email: glu@hotmail.com



Thomas Lee

Phone: 027 332 1292
 Email: lee.whanautk@gmail.com



Bill Machen

Phone: 027 471 5899
 Email: lilyandbill@xtra.co.nz



Arama Ngapo-Lipscombe

Phone: 0275 339 988
 Email: arama@nll.co.nz



Putāruru

Gray Baldwin

Phone: 027 239 0497
 Email: baldwin@xtra.co.nz



Adrienne Bell

Phone: 027 471 2404
 Email: adriennejb@yahoo.co.nz



Herman van Rooijen

Phone: 027 246 6601
 Email: vanrooijen@xtra.co.nz



Tirau

Peter Schulte

Phone: 021 434 933
 Email: peter@otobahncoffee.com

