

# Putāruru

## Growth Plan Newsletter



Update | News | Information | Milestones | Timeline | Contact

Newsletter 6 - June 2019

### What has the team been up to?

As you many readers will be aware, Council has been working for some time to develop a District Plan Change to re-zone selected areas around the edge of Putāruru to provide for anticipated residential and business growth.

The final reports from Watershed consultants have been received and reviewed by Council. Watershed consultants have assessed the capacity of the three waters– stormwater, water supply and wastewater. The modelling and in field calibration has provided Council with the thresholds to determine when infrastructure will need to be upgraded to meet the needs of development. The reports support the Plan Change to progress to the next step and include details of the types of upgrades required.

A quantity surveyor has been commissioned to provide cost estimates for the infrastructure service upgrades likely or expected to service the proposed growth areas. This information will inform decision makers on the costs to future ratepayers to ensure that the growth proposals are a success.

Council has also received the final report from CKL consultants about the transportation impacts and the levels of service levels at the critical SH1/ Princes Street intersection to access the proposed business zone to at least to 2030. This report is favourable, and is important to answer the New Zealand Transport Agency's concerns about the safe and efficient functioning of the State Highway.



### Understanding the Review process

Council has an existing District Plan



Council identifies changes required (ie, re-zoning parts of Putāruru to cater for growth). Need identified from feedback late 2016/early 2017



Council reviews existing plan. Council conducts complete technical study (underway). Plan changes that affect the Waikato River Catchment must be approved by joint committees between Council and Iwi.

We are here

Council approves a **PLAN CHANGE** for public consultation

**There were two possible 'routes' to take to progress this PLAN CHANGE - the normal process or a streamlined process introduced by the government. We have decided to take the normal process as it gives us more control.**

#### **NORMAL**

PLAN CHANGE process

Council notifies **PLAN CHANGE** for submissions

Council creates summary of submissions. Reviewed by submitters

Further submissions sought

Council reviews all submissions and produces a report for Council hearing

Submitters heard if they wish (public hearings)

Individual submission points and/or identified changes approved or declined

Public and submitters notified

**PLAN CHANGE** becomes operative and we have a new DISTRICT PLAN - if no appeals



# Putāruru Growth Plan Newsletter



Update | News | Information | Milestones | Timeline | Contact

The draft Plan Change documents have now been circulated to Iwi Authorities to ask for feedback. Recommendations have also been shared with Raukawa and Te Arawa River Iwi Trust for endorsement under our Joint Management Agreements. It is anticipated that this feedback will allow Council to finalise our Plan Change in July/August.

Ongoing discussion has been taking place with other government agencies direct such as KiwiRail and NZTA, which has been positive to date.

During April, Council provided guidance to staff which confirmed the normal process (under the Resource Management Act) rather than streamlined process (Ministerial approval) to be followed. This will allow greater control by Council to prioritise and amend the Plan Change if required to ensure timely success.

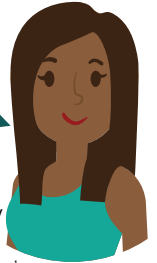
Advice is being provided to developers regarding any prospective development and/or subdivision in Putāruru by the planning team. If you have enquiries of this nature, please feel free to phone or visit the Council offices and ask for the Duty Planner.

## What are our next steps?

- Finalising the Plan Change taking into account feedback from Iwi.
- Understanding the budgets necessary to improve infrastructure capacity and capability over the coming years and the impacts of this on ratepayers and other Council programmes of work.
- Further consultation with landowners and the Steering Group.
- Public open day in Putāruru to be confirmed in coming months.
- Finalisation of all documents in August.

The goal is to have the proposed Plan Change on Council agenda for 12 September, and a Council resolution to publicly notify the Plan Change and start formal the Resource Management Act procedure.

**I want to be kept in the loop**



Sign up to our digital monthly newsletter to ensure you receive regular news updates.

**I have a question**



Contact Council's Senior Planner, Patrick McHardy on 07 885 0785

**I want more information**



Visit our website: [www.southwaikato.govt.nz](http://www.southwaikato.govt.nz)  
Our Council - Major Projects - Putāruru Growth Plan

